



User Guide for OCR for Bangla Documents

19 December, 2005

**Bangla Localization Project
PAN Localization Project
Research Institute
BRAC University, Dhaka
Bangladesh
Table of Contents**

Introduction	3
Running the Application	3
Using Application	4

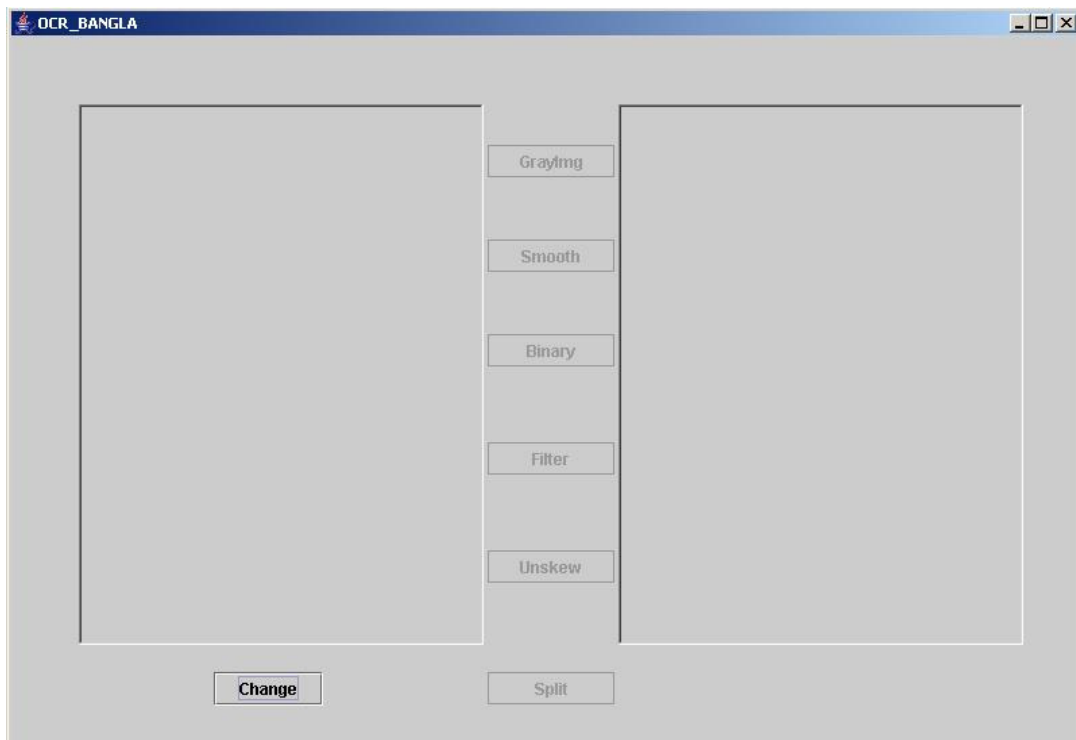
Introduction

This document explains how to use the application performing elementary steps of OCR for Bangla documents.

Running the Application

After the successful installation of software and all its dependencies, follow the steps below to start the application.

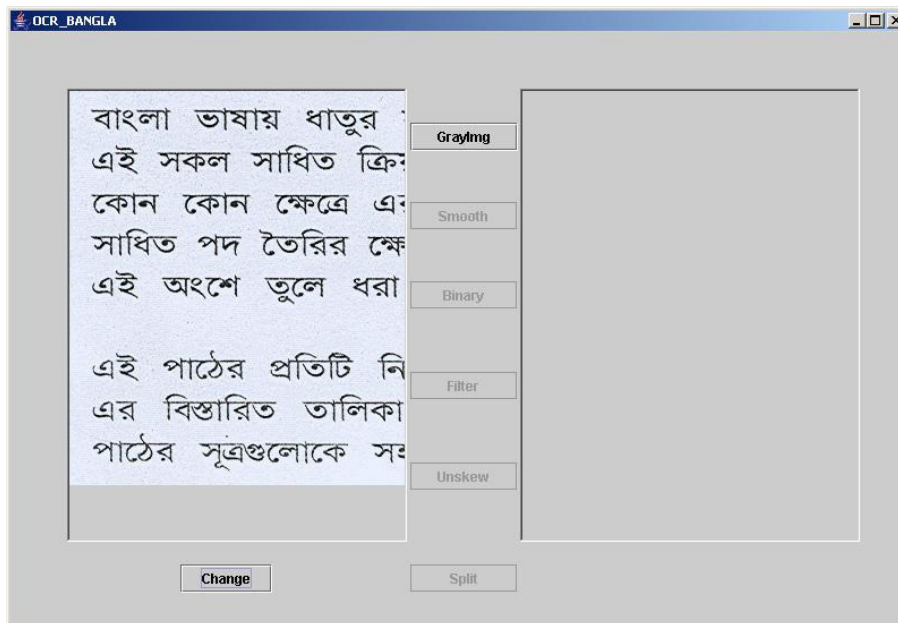
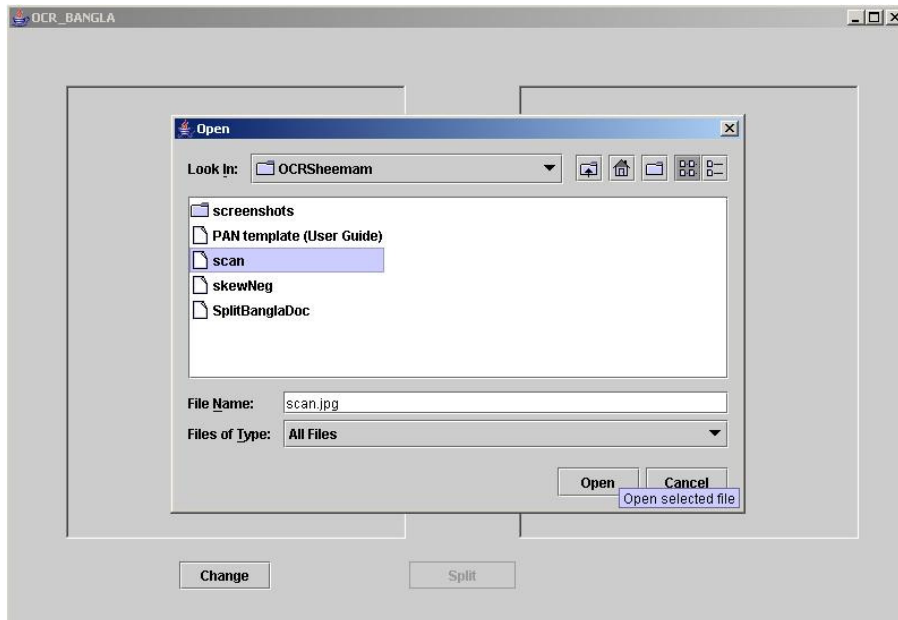
1. Open a shell terminal.
2. Go to the directory where you have copied SplitBanglaDoc.jar.
3. Now execute the application by running the following command:
<JAVADIR>/java -jar SplitBanglaDoc.jar
Hence <JAVADIR> is the folder where the executable 'java' file resides.



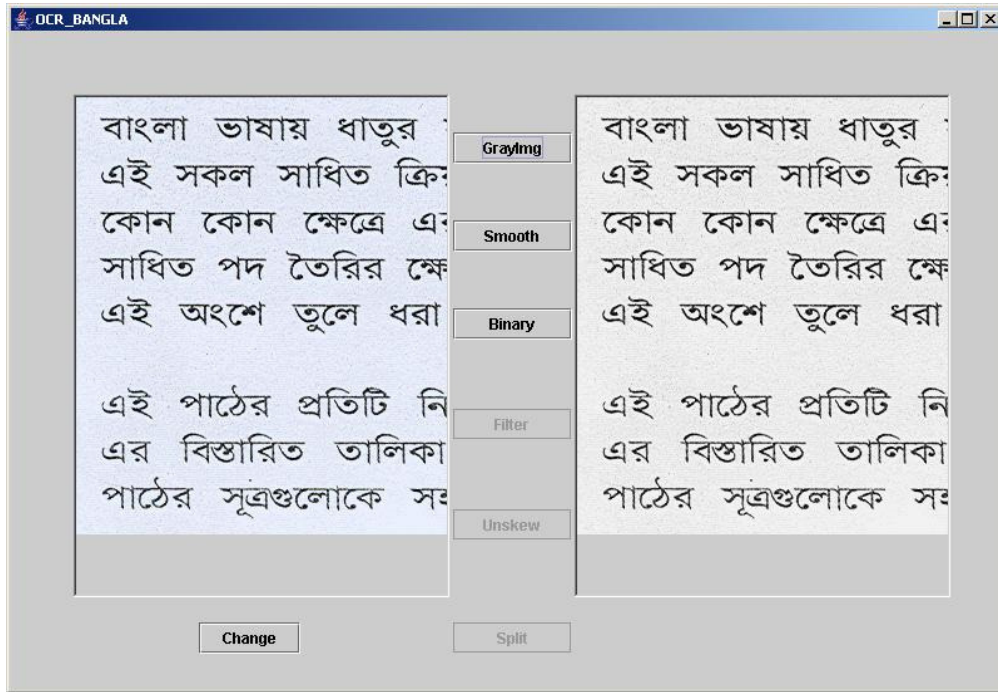
Using Application

To use this application, follow the steps below :

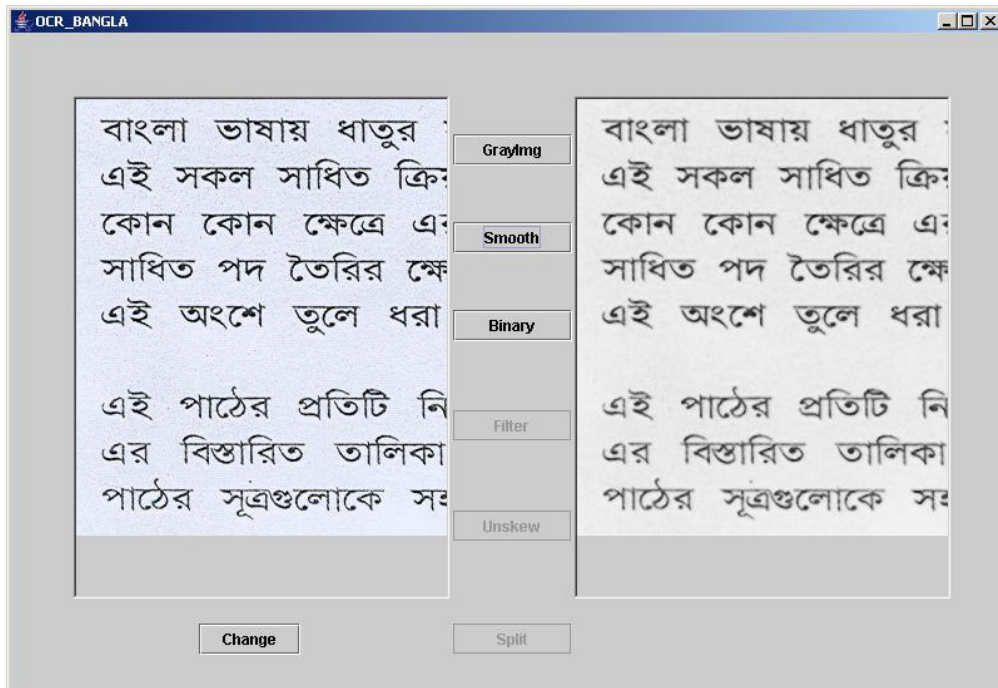
1. click on the 'Change' button to load a new BANGLA document image.



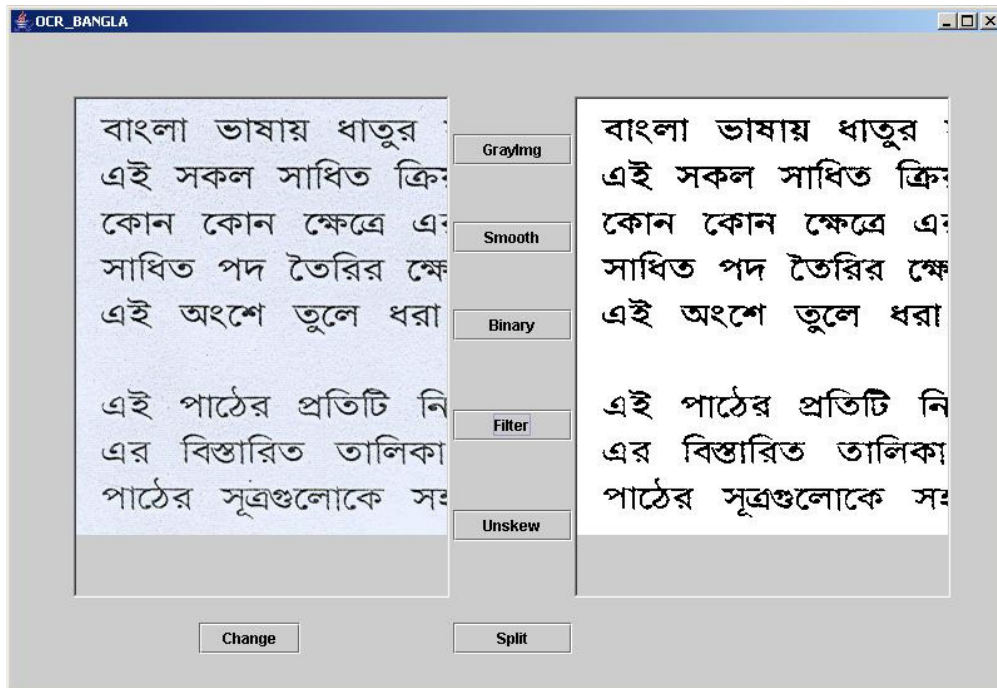
2. click on the 'Grayimg' button to transform the image into a gray one.



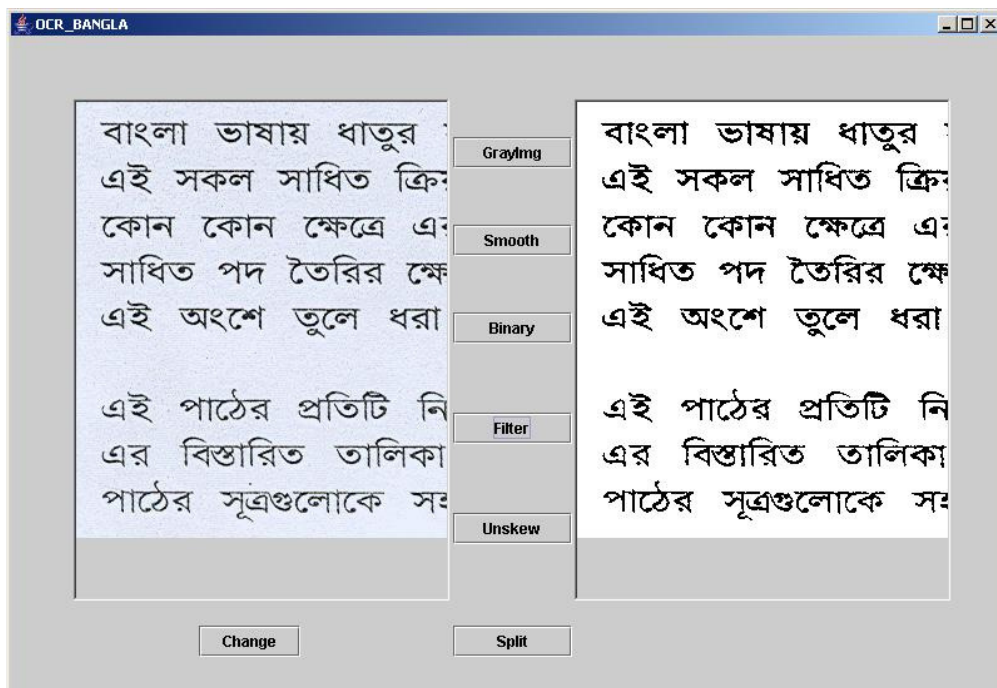
3. click on the 'Smooth' button to make reduce the effect of noise in the image.



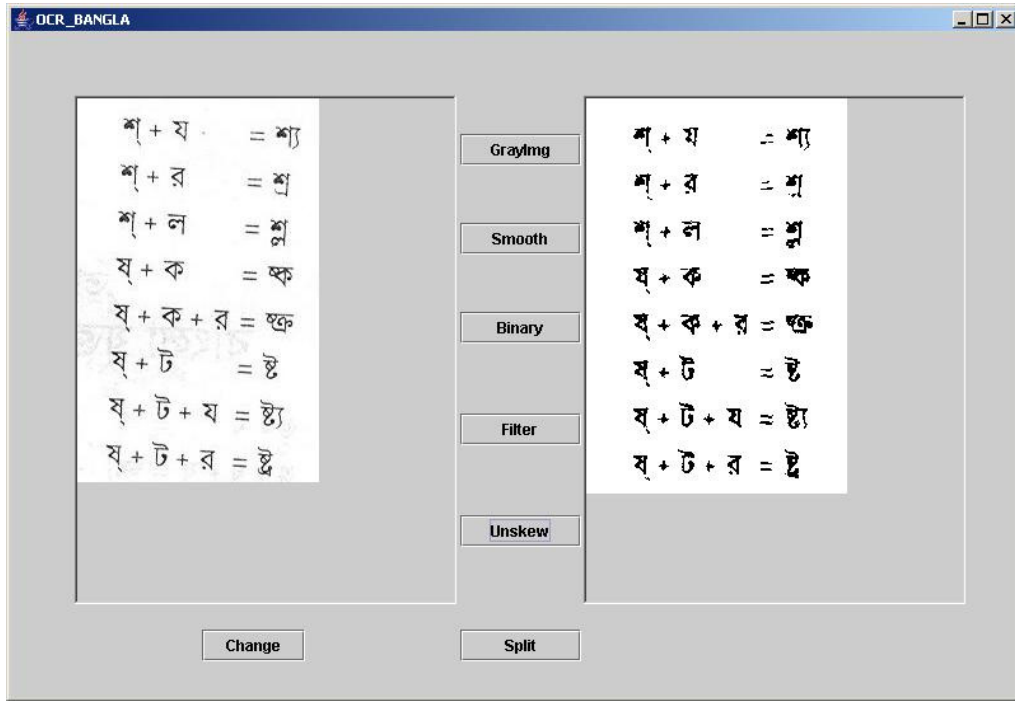
4. click on the 'Binary' button to transform the image into black & white.



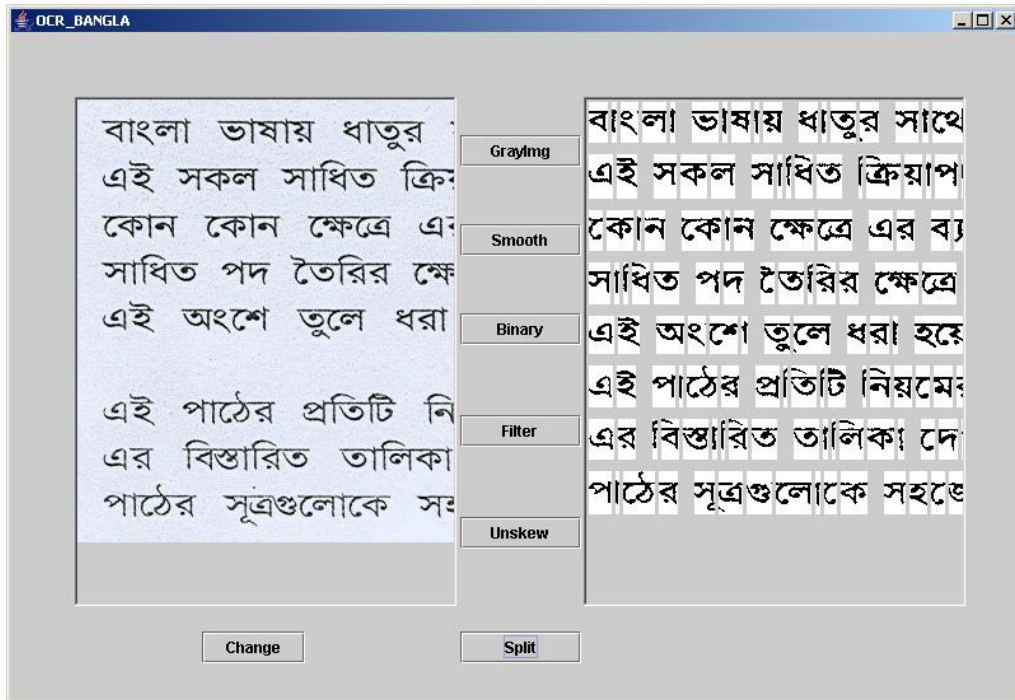
5. click on the 'Filter' button to clear out small black spots from the image.



6. If the image is skewed, click on the 'Unskew' button.



7. And finally click on the 'Split' button and see the glyphs of different letters separated from one another.



If you want to change the current document image click on 'Change' button whenever you want.