



User Guide for Bhul, spelling checker for Bangla

May 8, 2005

**Bangladesh Country Component
PAN Localization Project
BRAC University, Bangladesh**

Table of Contents

1	Introduction.....	3
2	Running the Application	3
3	Using Application.....	4

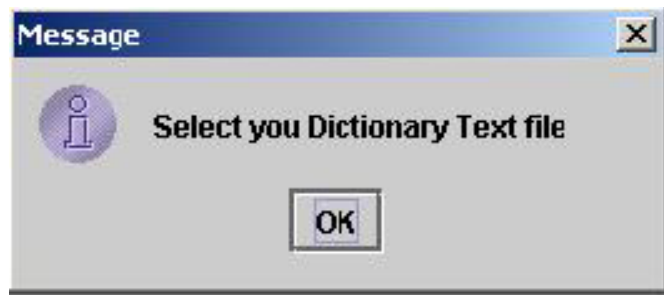
1 Introduction

This document explains how to use software.

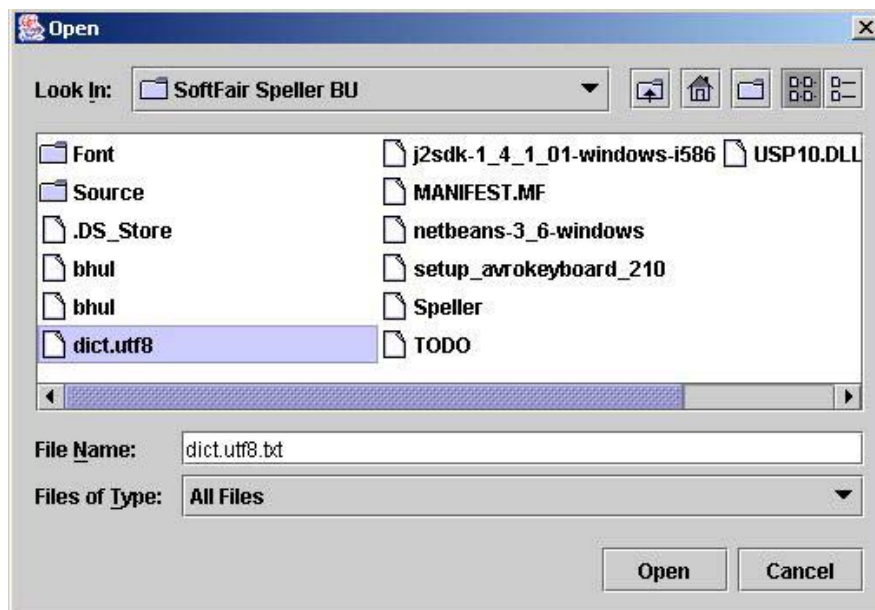
2 Running the Application

After the successful installation of software and all its dependencies, follow the steps below to start the application.

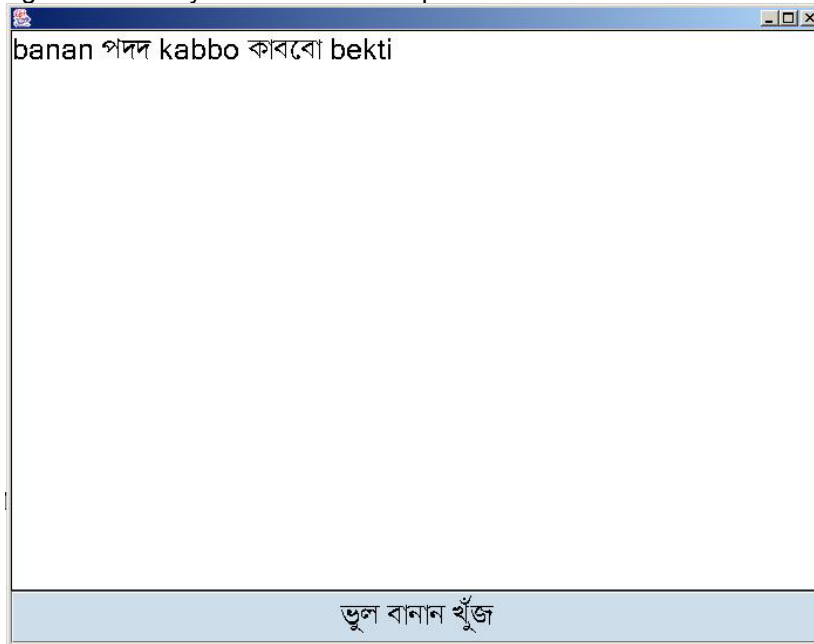
The spelling checker is an executable JAR file. After running the application it will ask to select the dictionary file by following message.



We have to select the dictionary file by following way.



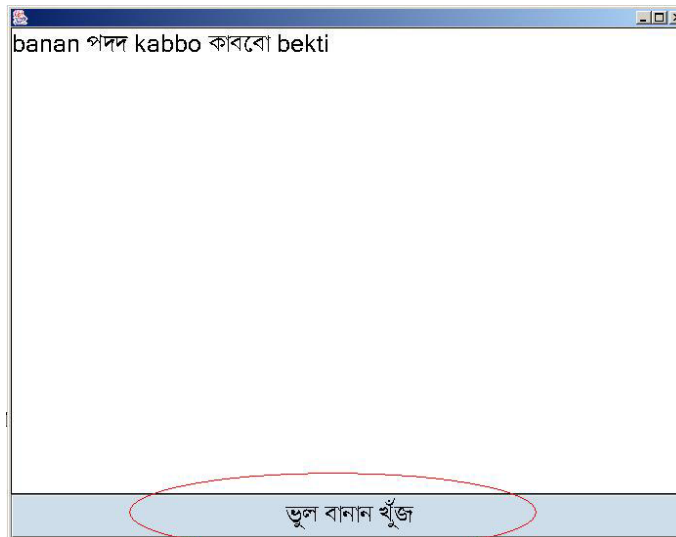
After selecting the dictionary file an editor will open.



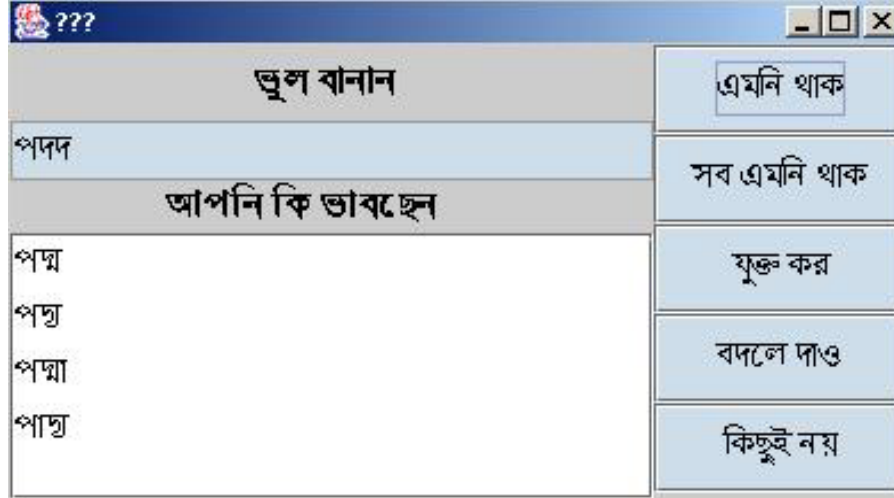
This is our spelling checker for Bangla, Bhul. We can write here and check spelling.

3 Using Application

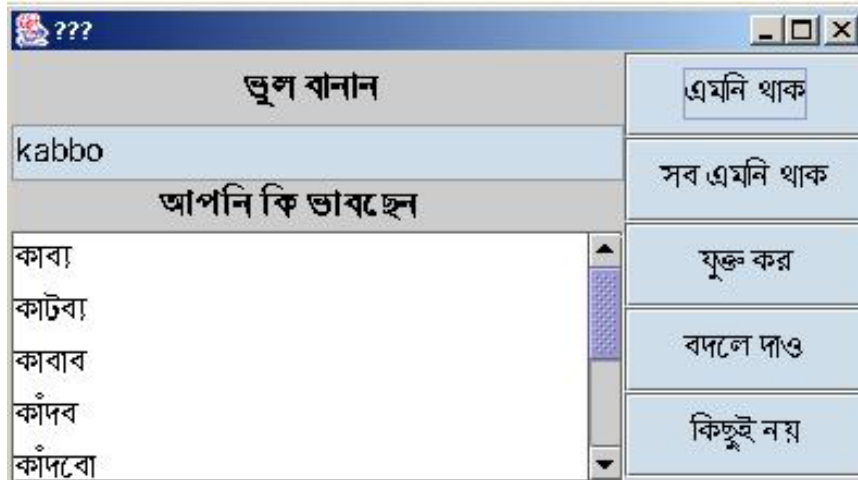
1. This application has an editor to write and a button for checking spelling.
2. User can write either in English or in Bangla, spelling checker will give the similar sounding word in the suggestion.
3. After writing the desired text in the editor, user needs to click the button ভুল বানান খুঁজ for spell checking.



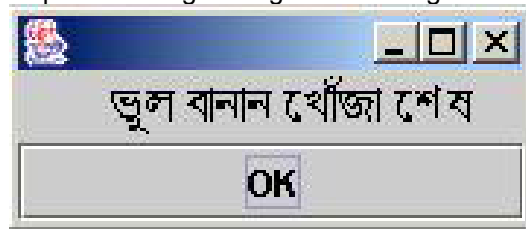
4. After clicking the button ভুল বানান খুঁজ, a pop up window will come with spelling suggestions.



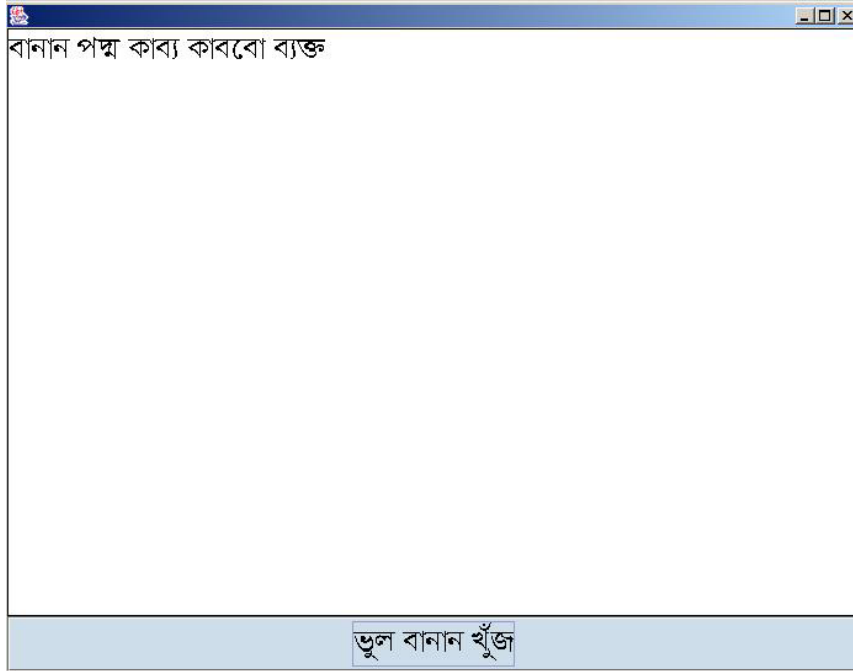
5. This pop up menu consists of 5 buttons. এমনি থাক, সব এমনি থাক, যুক্ত কর, বদলে দাও, কিছু নয়.
- এমনি থাক for ignore.
 - সব এমনি থাক for ignore all.
 - যুক্ত কর for add.
 - বদলে দাও for replace.
 - কিছু নয় for cancel.
6. This will generate suggestion for words, both written in Bangla and English.



7. After completion of spell checking it will give a message.



8. After replacing the misspelled words and adding the words, it will change the misspelled words in the document to corrected words.



9. If someone checks spelling of a document that does not have any misspelled words, then it will give a message.

