



# **User Guide**

**For**

# **Standalone Khmer Lexicon Utility**

**January 22, 2006**

**Cambodia Country Component  
PAN Localization Project  
PAN Localization Cambodia of IDRC**

## Table of Contents

1	Introduction.....	4
2	Running the Application .....	4
3	Using Application.....	5

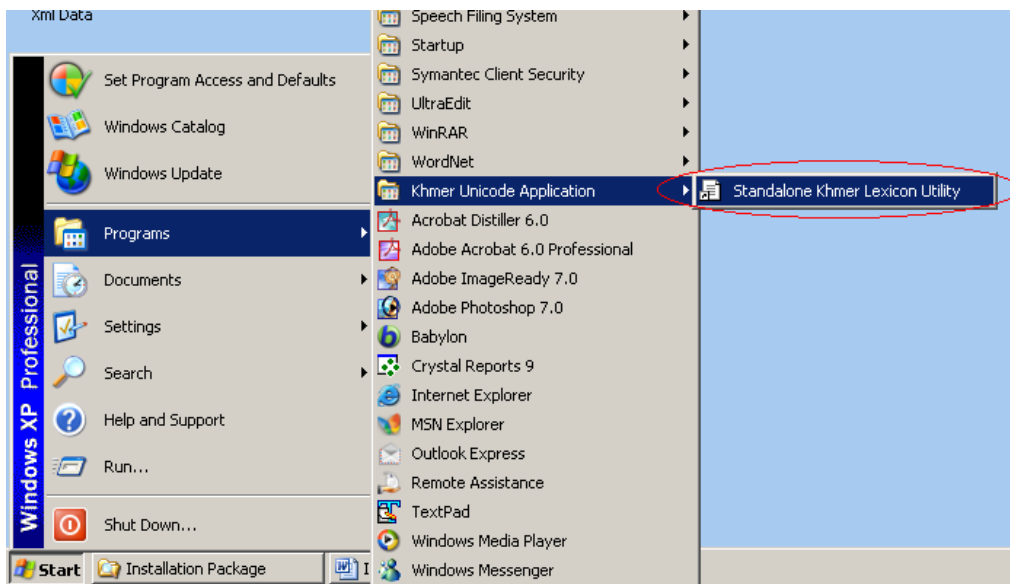
## 1 Introduction

Standalone Khmer Lexicon Utility is Smart Dictionary which based on CHUORN Nath Dictionary. This document explains how to use the software.

## 2 Running the Application

After the successful installation of the software and all its dependencies, the application can be started by the following step:

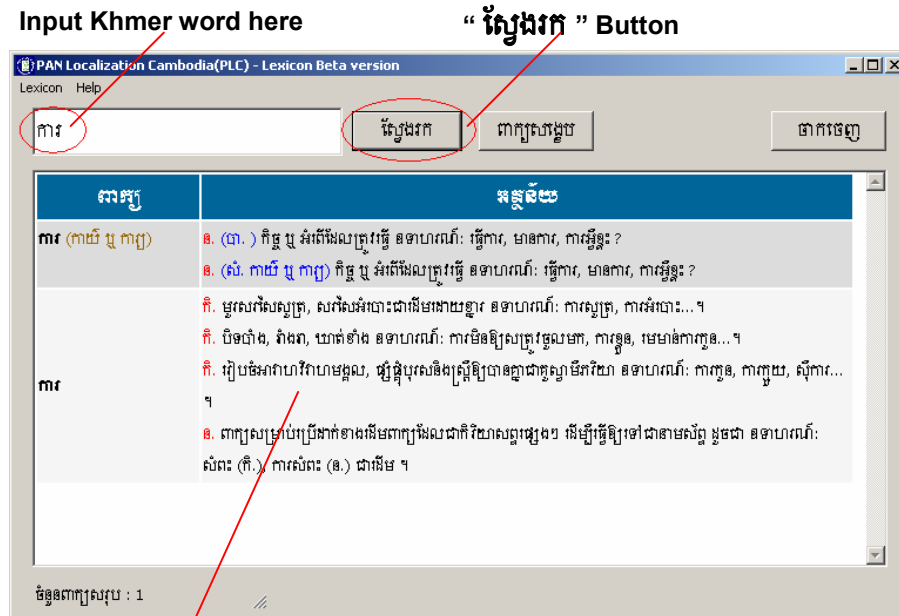
1. Start menu
2. Programs
3. Khmer Unicode Application
4. Standalone Khmer Lexicon Utility



### 3 Using Application

**a. Searching for a specific word**

Click on “ស្វែងរក” Button after you type the word to be search.

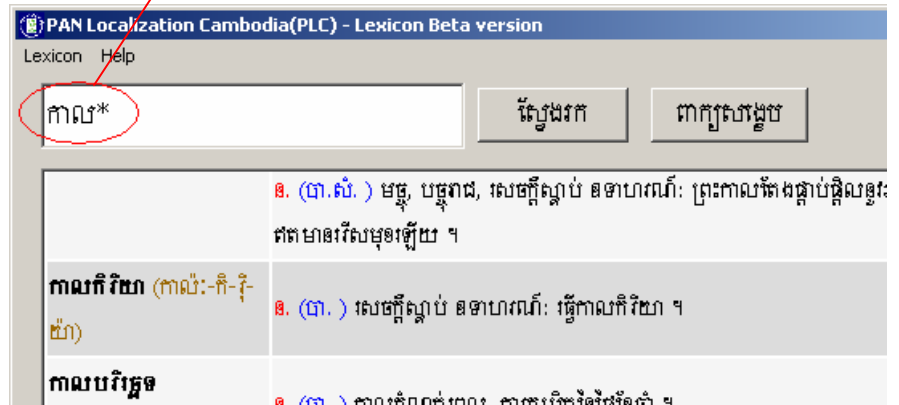


Output result is shown here

**b. Searching for a Regular Expression**

Besides searching by a completed Khmer word, you can use Regular Expression instead.

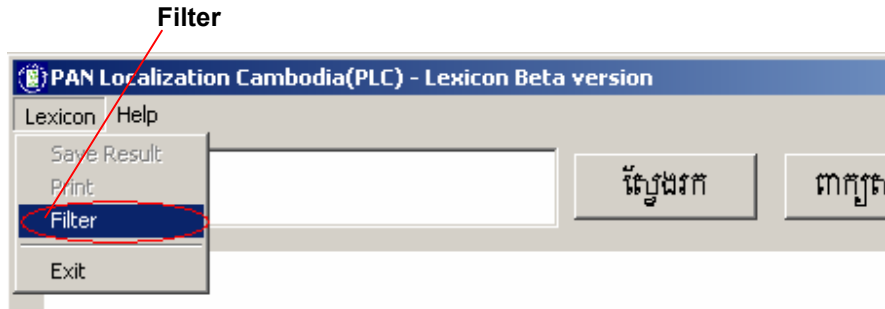
Input Regular Expression here



### c. Filtering Output

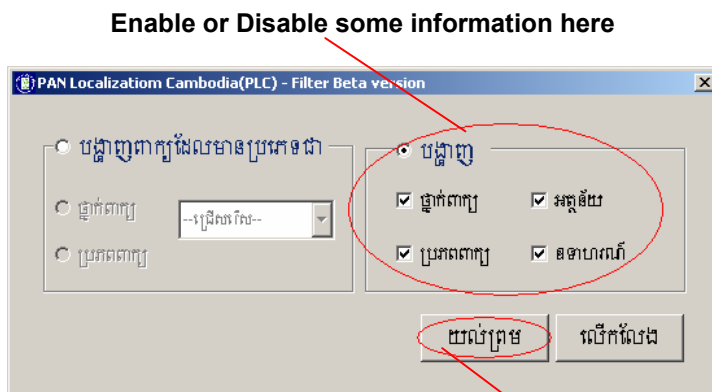
To filter the output (Searched result) you should follow the following step:

1. Lexicon menu
2. Filter



Then the following Windows will appear on screen.

Click “ យល់ព្រម ” button to activate your filtering.



“ យល់ព្រម ” button

### d. More Instruction

For more instruction, you can go with two ways.

- ✓ Click “ ពាក្យសង្ខេប ” button.
- ✓ Click “Help” menu → “Glossary”.

