



User Manual

For

Khmer Spell Checker

January 22, 2006

**Cambodia Country Component
PAN Localization Project
PAN Localization Cambodia (PLC)**

Table of Contents

1	Introduction.....	4
2	Running the Application	4
3	Using Application.....	5

1 Introduction

This document describes how to run and use the Khmer Spell Checker Application.

2 Running the Application

After the installation of the application and all its dependencies, the application can be reached in two different ways:

1. The “Spell Checker” button embedded to each Microsoft office application such as Ms. Word, Ms. Excel and Ms. Power Point.

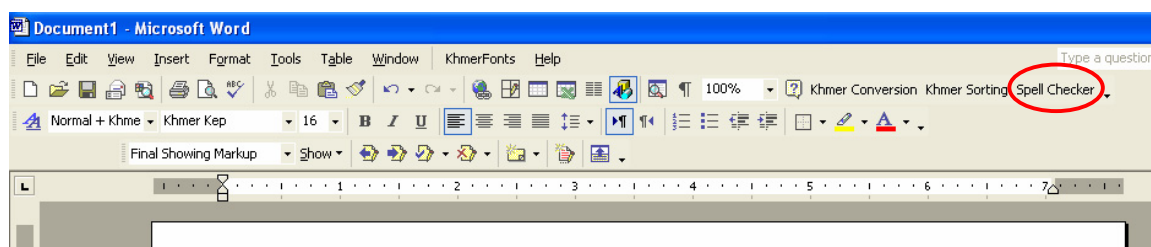


Figure 1: Start up Khmer Unicode Spell Checker in Ms. Word Application

2. Stand-alone Application in the program menu startup (Figure 2)

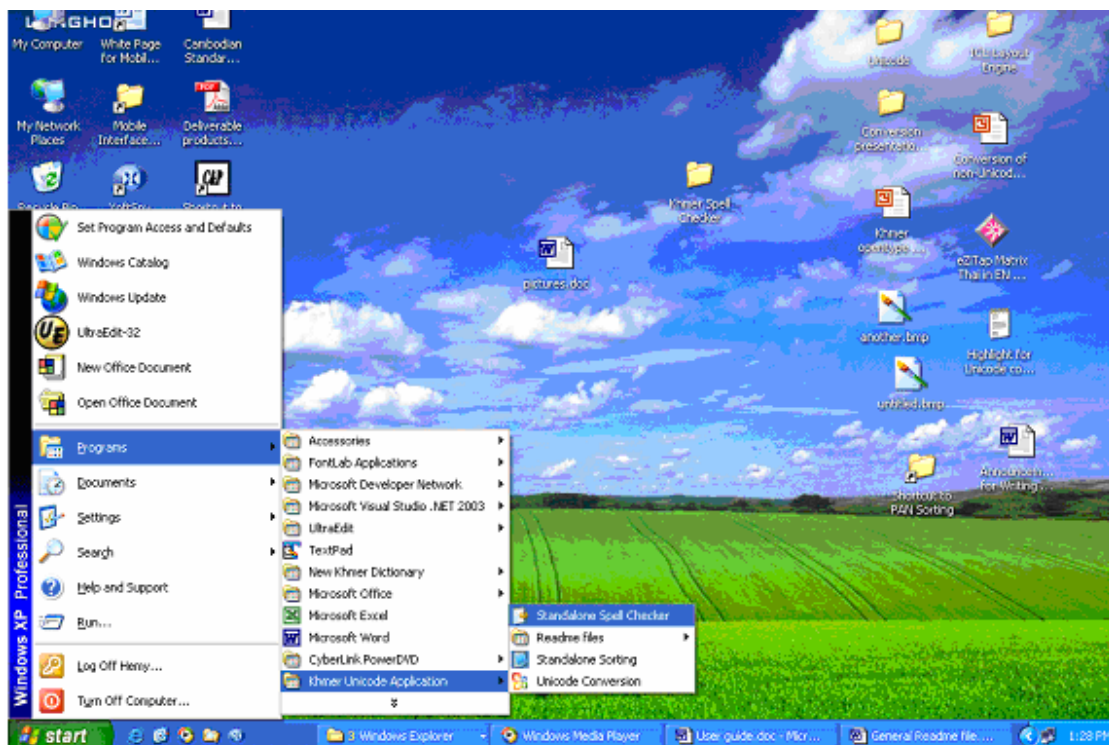


Figure 2: Start up Khmer Unicode Spell Checker in Stand-alone Mode

3 Using Application

1. Check Khmer Spelling Error in Microsoft Office

1. Open the document to be checked spell in Office Applications such as Ms. Word, Ms. Excel, Ms. Power Point
2. Click on "Spell Checker" button to check spelling of the document.

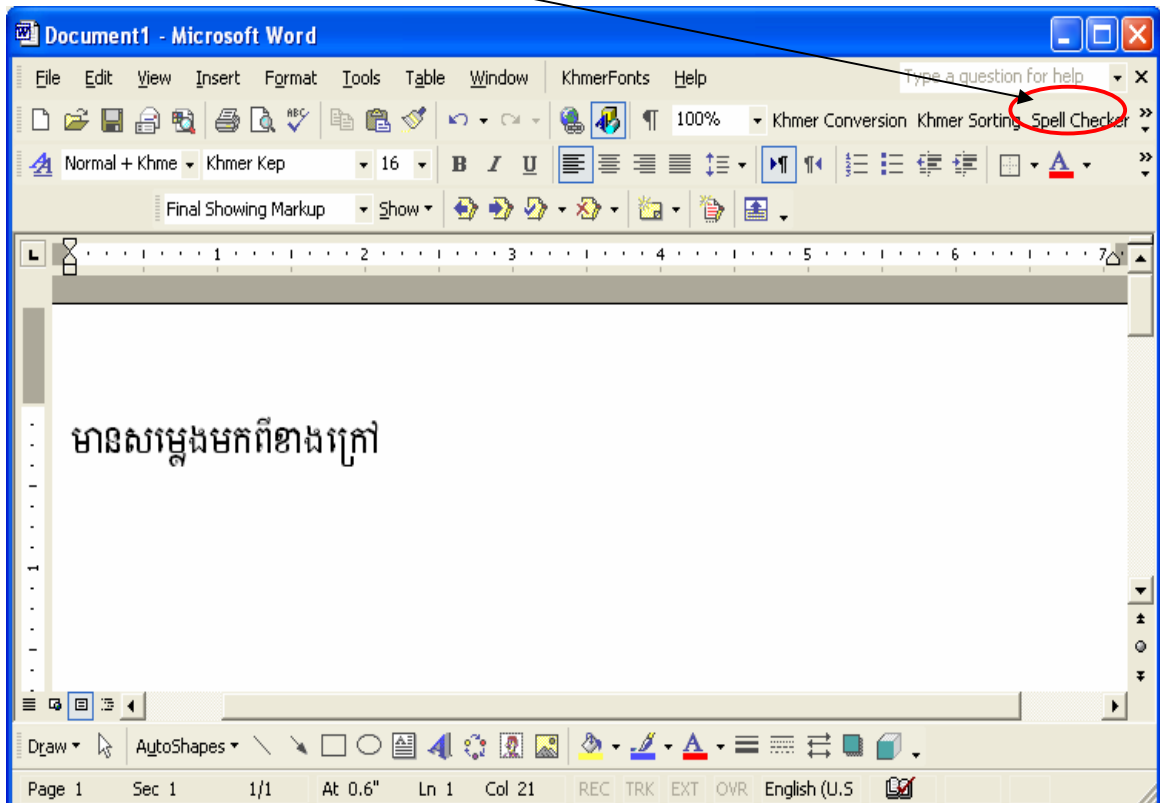


Figure 3: Khmer Unicode Spell Checker in Ms. Word

3. If there is error, a form is loaded to indicate Error Word in the text and provide the suggestions as below.

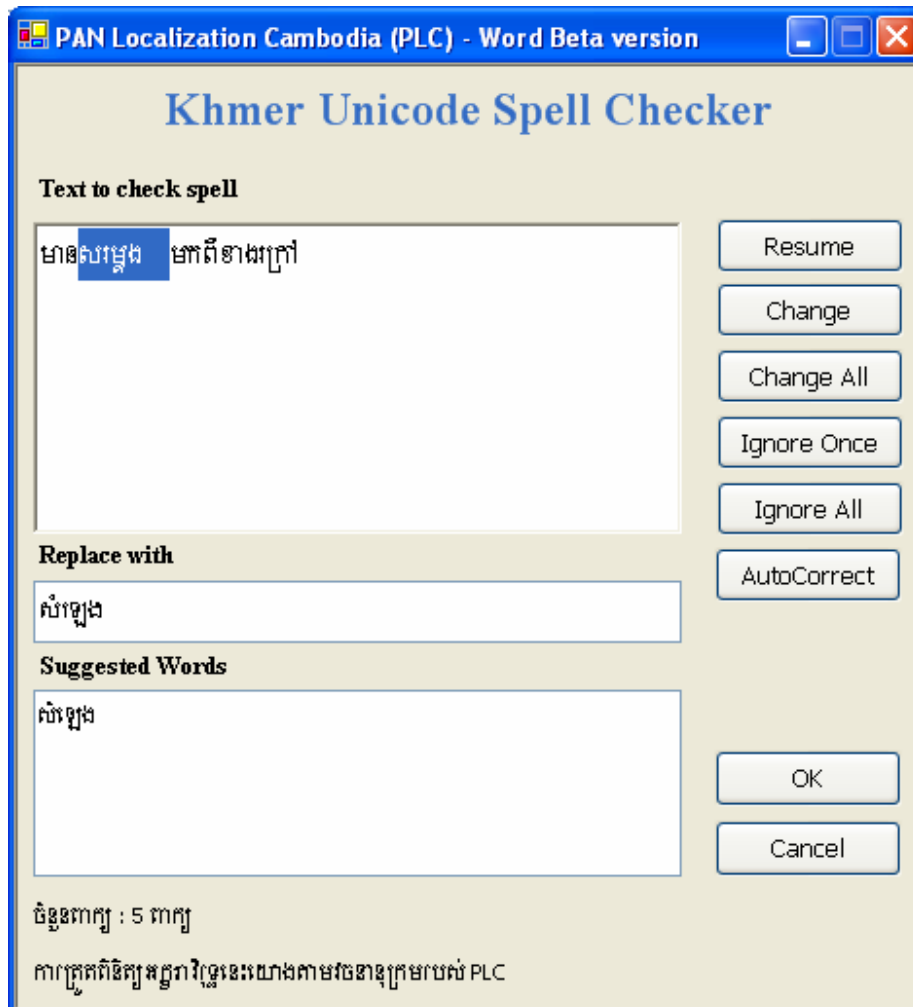


Figure 4: Khmer Unicode Spell Checker in Ms. Word

4. Actions on the Error Word
 - a. “Change” : To change the error word to the suggested word and search for the next error
 - b. “Change All” : To change all the same error words in the box into the suggested word and search for the next error
 - c. “Ignore” : To ignore the current error word and search for the next error
 - d. “Ignore All” : To ignore all the same error words in the document and search for the next error
 - e. “Auto Correct” : To automatically correct all the errors in the box. In case, there is more than one suggestion, it chooses the first occurrence of the list.

2. Check spell in Atand-alone Mode

1. Go to "Start" menu
2. Select "Programs"
3. Select "Khmer Unicode Application"
4. Choose "Stand-alone spell checker"
5. Paste the Unicode text to be checked spelling errors into the the "Text to check spell" box
6. Choose the dictionary
7. Click on "Detect Error" to check spelling errors

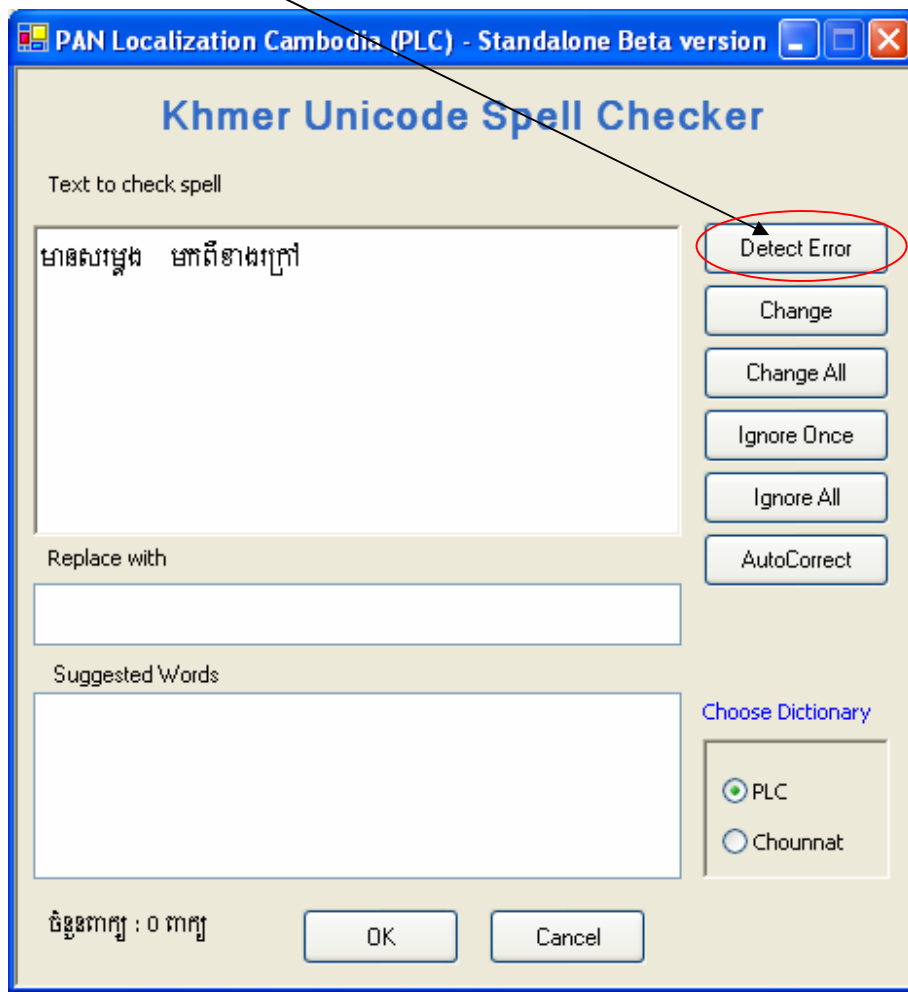


Figure 5: Khmer Unicode Spell Checker in Stand-alone Mode

8. The error words will be highlighted and the suggestion list will be appeared in the suggested words box.

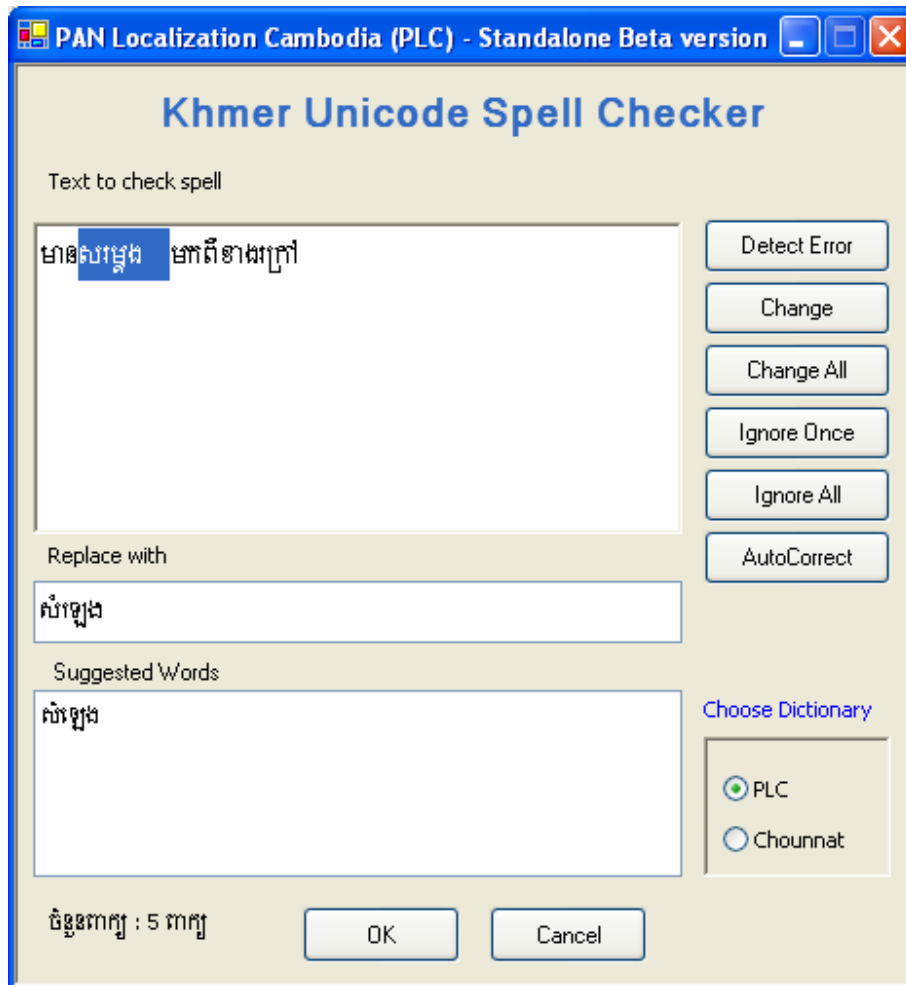


Figure 6: Khmer Unicode Spell Checker in Stand-alone Mode

9. Actions on the Error Word
 - a. “Change” : To change the error word to the suggested word and search for the next error
 - b. “Change All” : To change all the same error words in the box into the suggested word and search for the next error
 - c. “Ignore” : To ignore the current error word and search for the next error
 - d. “Ignore All” : To ignore all the same error words in the document and search for the next error
 - e. “Auto Correct” : To automatically correct all the errors in the box. In case, there is more than one suggestion, it chooses the first occurrence of the list.