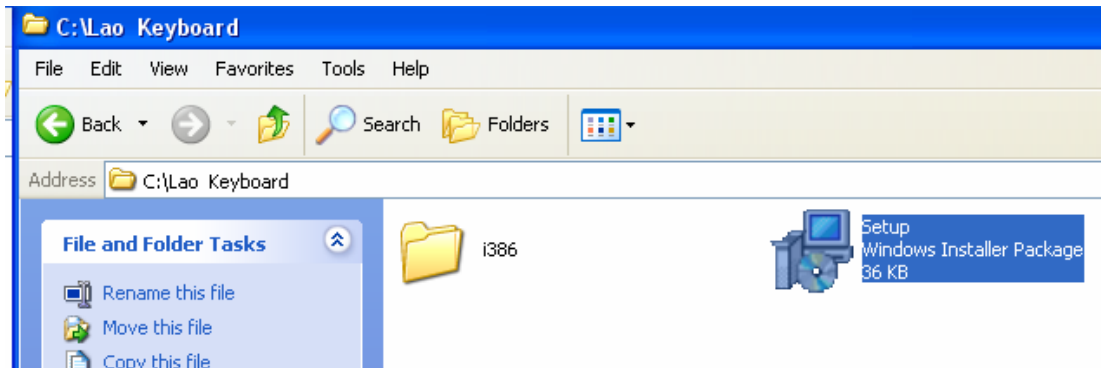


New Keyboard driver

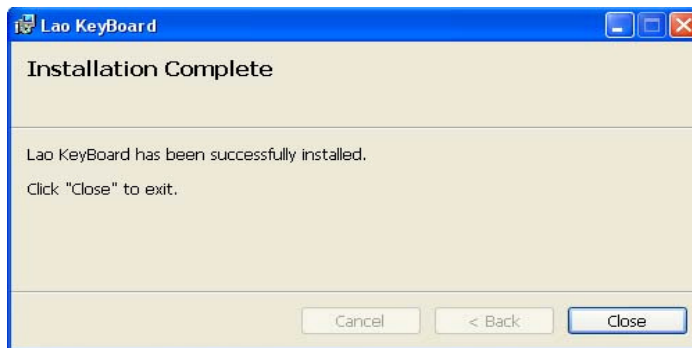
The new keyboard driver was created under **Microsoft Keyboard Layout Creator** software application and generated into the execute file format, which can be using for the Microsoft Operation System start from 2000 version to the lattes.

The installation process are following:

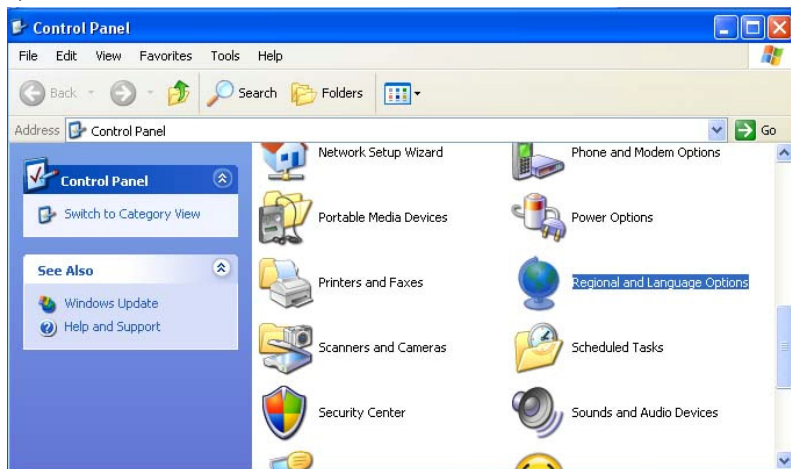
- ❖ Run the “Setup” file from the Lao Keyboard folder



- ❖ Close the window box after installation was successful completed



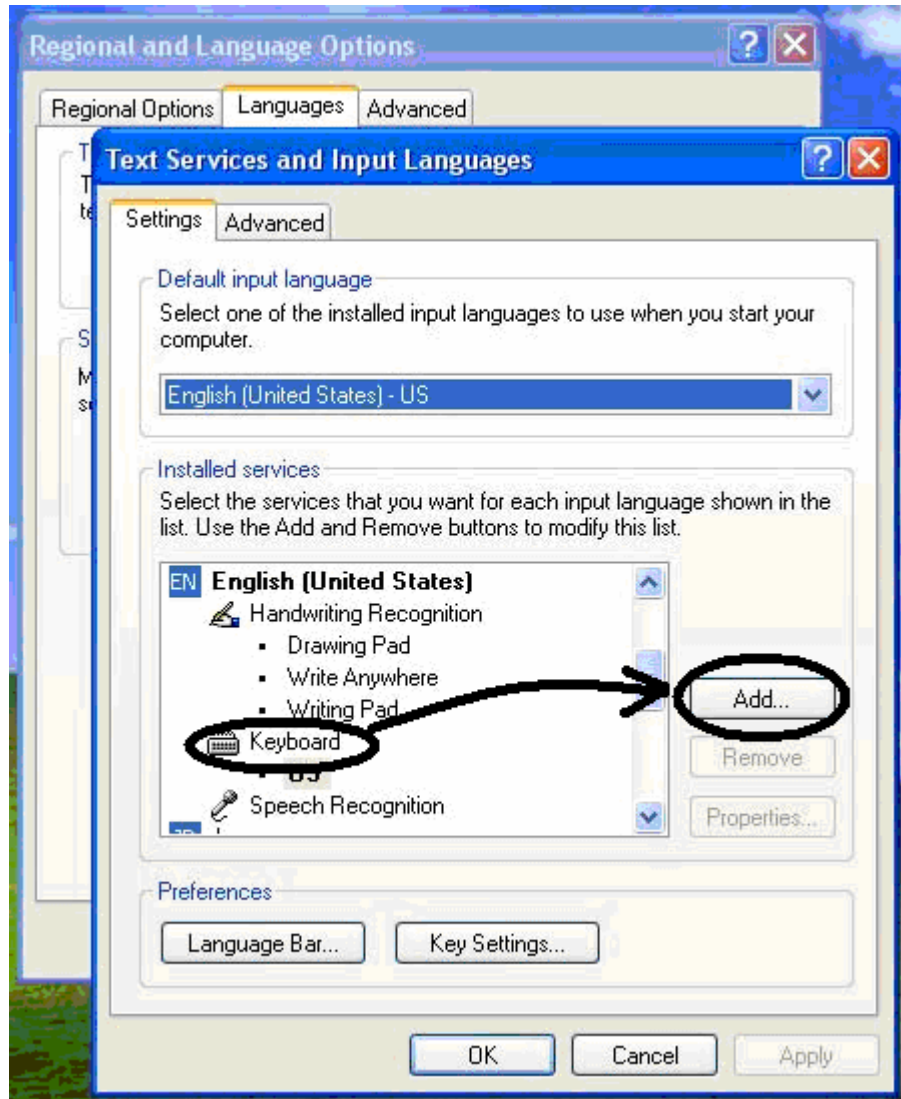
Go to Start > Control Panel > Date, Time, Language, and Regional Options > Regional and Language Options



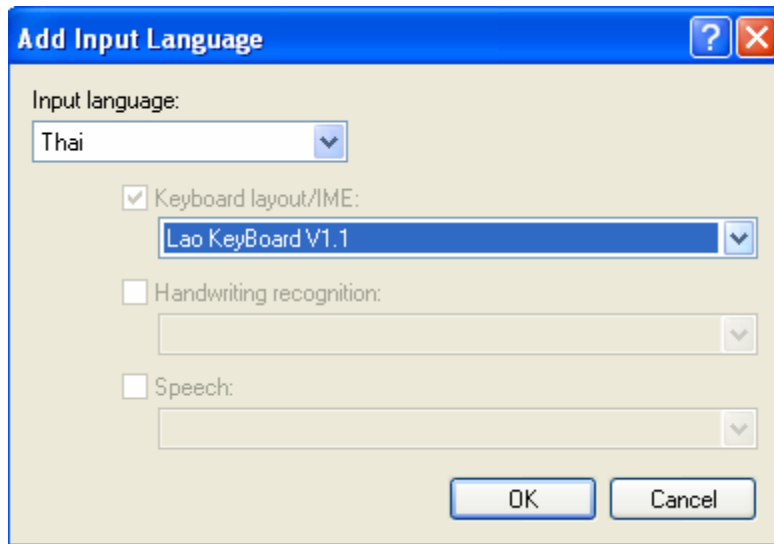
- ❖ Select **“Languages”** tab in opened window.
- ❖ Select the Details icon from Regional and Language



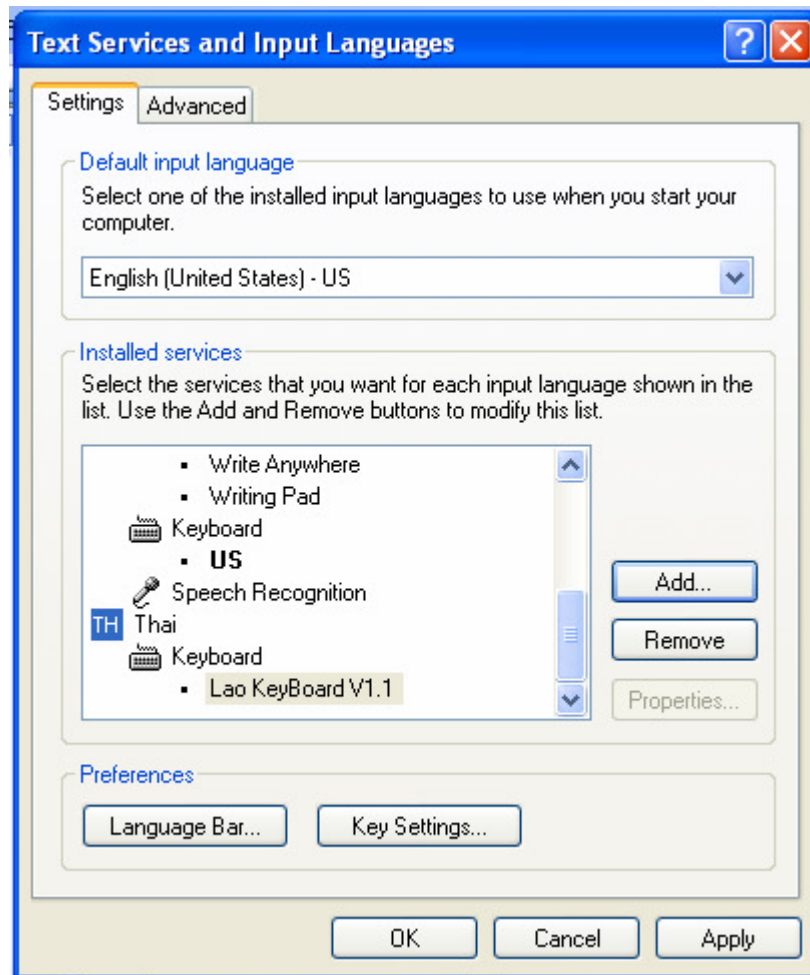
- ❖ User is required to check **“Install files for East Asian Languages”** if it is not already checked.
- ❖ Select **“Add”** in order go to **“Add Input Language”**



- ❖ Select **“Thai”** or any other in the **“Input Language”** and **Lao Keyboard** in the **“Keyboard layout/IME:”**



- ❖ Click “OK” and Apply in previous window:



- ❖ Keyboard can be toggled with other keyboards using ALT+ Shift.