



Installation Guide for the Optical Character Recognition System for Sinhala (Alpha Release)

1st October 2005

**PAN Localization Project
Language Technology Research Laboratory
University of Colombo School of Computing
Sri Lanka**

Table of Contents

1	Introduction.....	3
2	Installation Prerequisite	3
2.1	Hardware Requirements.....	3
2.2	Software Requirements	3
2.3	Administrator Privileges.....	3
3	Installation of Optical Character Recognition System for Sinhala.....	4
4	Uninstall Optical Character Recognition System for Sinhala.....	8

1 Introduction

This document explains how to install and uninstall Optical Character Recognition system for Sinhala. It is utility software that provides facility to recognize Sinhala characters of a given image.

2 Installation Prerequisite

2.1 Hardware Requirements

<u>Platform:</u>	Pentium-compatible CPU
<u>Processor:</u>	166 MHz or above
<u>Memory:</u>	64MB or above

2.2 Software Requirements

<u>Operating Systems:</u>	Microsoft® Windows XP, (Service pack 1 or later)
<u>Other Software:</u>	Java 2 Runtime Environment, v1.4.2.SE (JVM)

2.3 Administrator Privileges

N/A

3 Installation of Optical Character Recognition System for Sinhala

Please follow the steps given below to install Optical Character Recognition System for Sinhala:

- A. Run **setup.exe** placed in **Sinhala OCR\setup** by double clicking it.
- B. After initialization, the installer program will show “**Welcome**” window on start up as shown in Figure 3.1.



Figure 3.1: Welcome window

- C. Click **Next**.
- D. The installer will display dialogue “**Destination Folder**”, setting the destination folder “Program Files” as default. You can change the destination folder by clicking the “**change**” button. Refer Figure 3.2

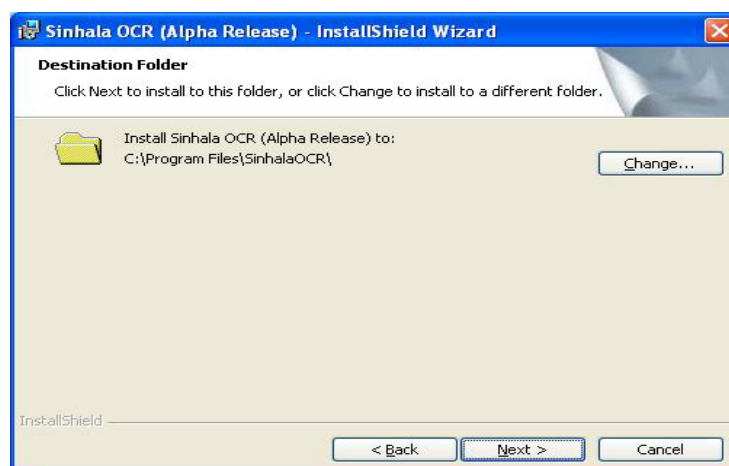


Figure 3.2: Destination Folder

- E. The installer will display dialogue “**Ready to Install the Program**”, reviewing the installation settings. The installer automatically collects information about the user and company from the system. Refer Figure 3.3

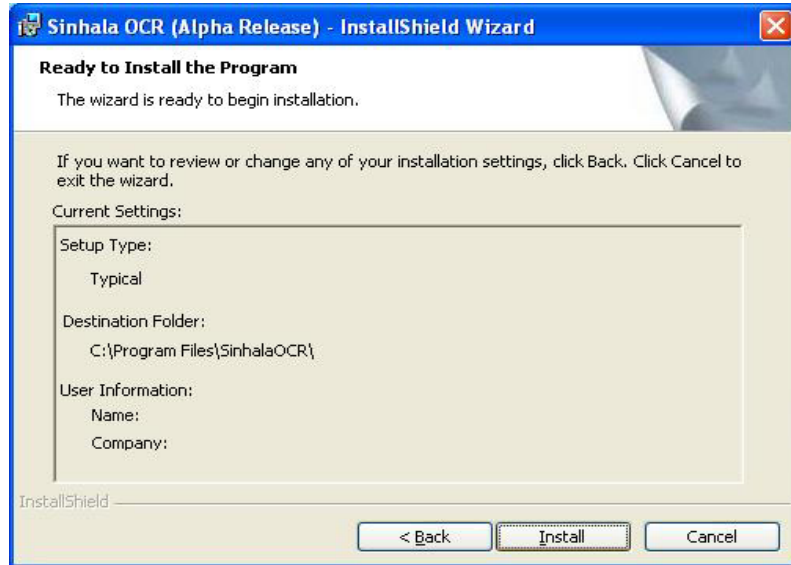


Figure 3.3: Ready to Install the Program window

- F. Click **“Install”**.

- G. Installer will create directories and start copying the programs files to the destination directory. Progress bar will show the percentage completion of installation process as shown in Figure 3.4

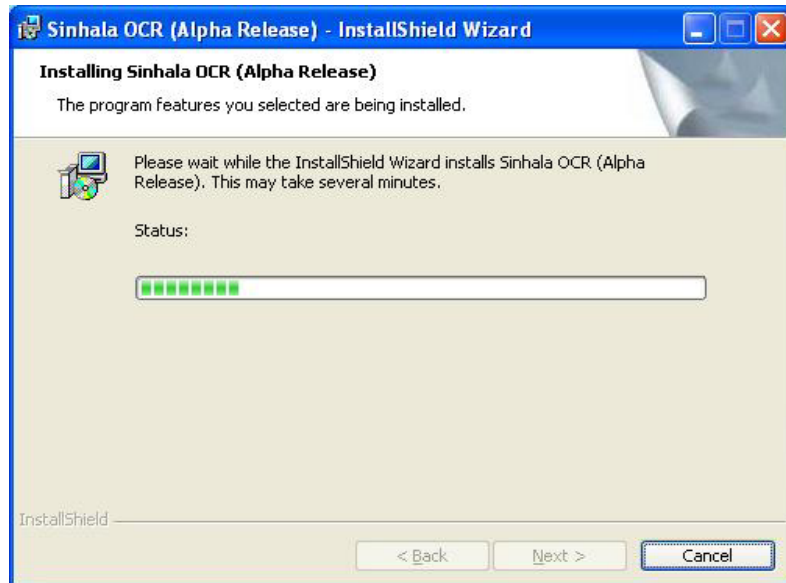


Figure 3.4: Installation in progress

- H. After a successful installation, the Optical Character Recognition system for Sinhala installer will show a success message. Click **Finish** to complete the setup. Please refer Figure 3.5.

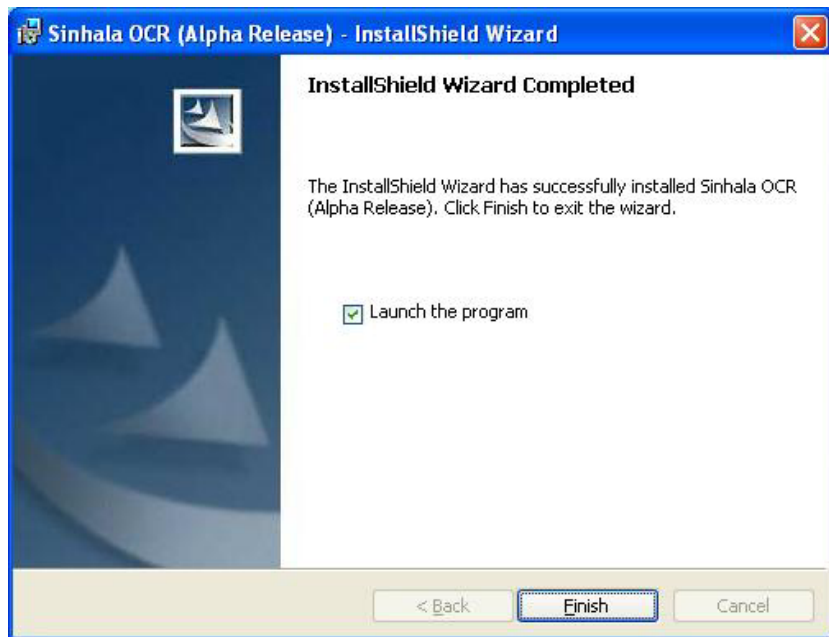


Figure 3.5: Setup complete

- I. In order to run the program, navigate through, Windows **Start** menu. -> **All Programs** -> **Sinhala OCR (Alpha Release)** And click on **Sinhala OCR** . Please refer Figure 3.5.



Figure 3.6: Start Optical Character Recognition System for Sinhala

- J. Program start screen will pop up. Figure 3.7 shows the start screen of Optical Character Recognition System for Sinhala. Refer to the **User Guide for Optical Character Recognition System for Sinhala** to use this software.



Figure 3.7: Start up screen of Optical Character Recognition system for Sinhala

4 Uninstall Optical Character Recognition System for Sinhala

Please follow the steps given below to uninstall Optical Character Recognition System for Sinhala.

1. In order to uninstall the program, navigate through, Windows **Start** menu. -> **All Programs** -> **Sinhala OCR (Alpha Release)** and click on **Uninstall**. Please refer Figure 4.1.



Figure 4.1: Uninstall Optical Character Recognition system for Sinhala

Alternatively, user can uninstall the software by running the windows utility “**Add or Remove Programs**”. Please go through the following instructions. Browse,

Start -> (Settings) -> Control Panel -> Add or Remove Programs

Open the Windows utility **Add or Remove Programs**, and select **OCR Preprocessor** as shown in Figure 4.2.

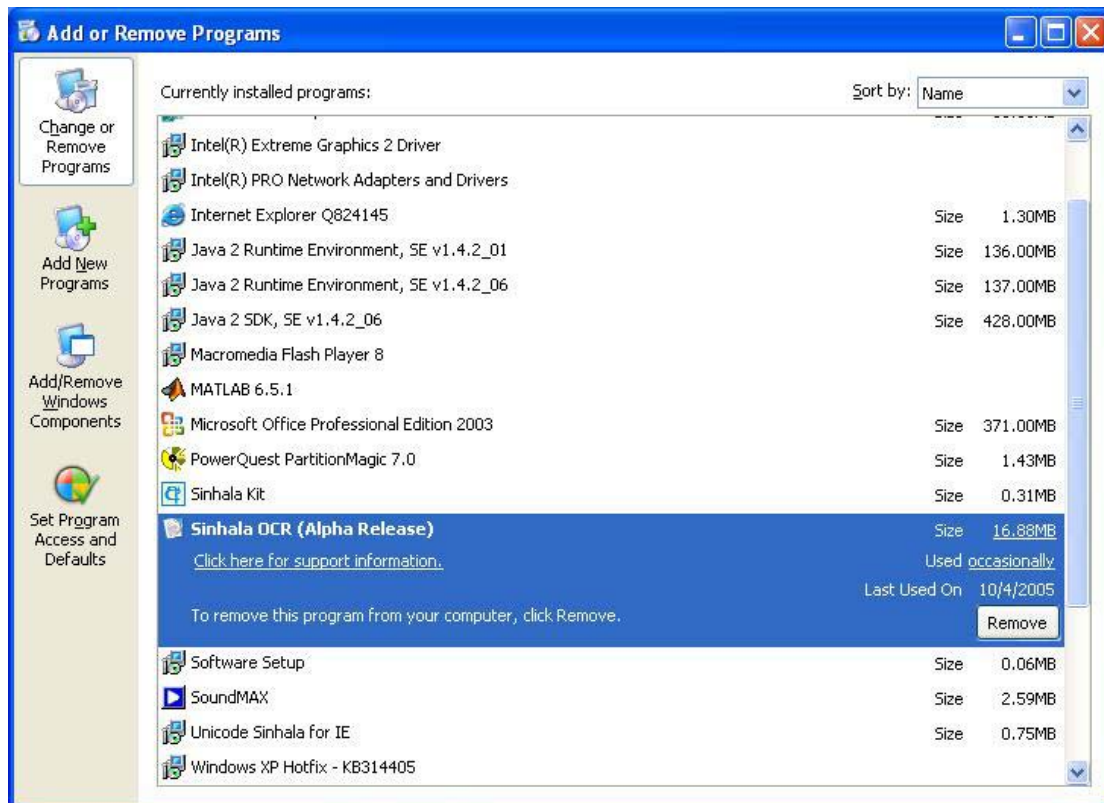


Figure 4.2: Add of Remove Programs, Windows utility

Click on **Change/Remove** button to start Optical Character Recognition system for Sinhala Uninstaller program.

- I. In startup, Uninstaller will show a Confirmation window as shown in Figure 4.3.



Figure 4.3: Confirm the uninstall operation

- II. Click **Yes** button to start uninstalling the program.
- III. Uninstaller will remove Optical Character Recognition system for Sinhala program files and other dependency file from the system.