



Installation Guide for Sinhala Text To Speech (Katha Baha JE) (Alpha release)

September 30, 2005

**Language Technology Research Laboratory
University of Colombo School of Computing
Sri Lanka**

Table of Contents

1	Introduction.....	3
2	Installation Prerequisites	3
2.1	Hardware Requirements.....	3
2.2	Software Requirements	3
2.3	Administrator Privileges.....	3
3	Installation of Katha Baha JE (Alpha release).....	4
4	Uninstall Katha Baha JE (Alpha release).....	8

1 Introduction

This document explains how to install and uninstall **Katha Baha** (*Alpha release*) software. This software effectively recognizes the entered Sinhala Unicode text and converts it into speech.

2 Installation Prerequisites

2.1 Hardware Requirements

<u>Platform:</u>	Pentium-compatible CPU
<u>Processor:</u>	300 MHz or above
<u>Memory:</u>	64MB or above

2.2 Software Requirements

<u>Operating Systems:</u>	Microsoft® Windows XP, (Service pack 2)
<u>Other Software:</u>	<ul style="list-style-type: none">○ Sinhala Language Pack or Sinhala Enabling Patch¹○ Java Runtime Environment v. 1.3 or higher must be installed.

2.3 Administrator Privileges

- User must have Administrator privileges to install the Katha Baha software.
- The installation folder should have the “**write**” access privilege since the software uses the same directory for temporary file creation at runtime.

¹ Sinhala Language Pack or Sinhala Enabling Pack can be download from the URL: <http://www.ucsc.cmb.ac.lk/ltr/> or <http://www.fonts.lk/>

User can install this software from JRE\SETUP folder. Please refer the installation instruction given in Readme.txt included in the same folder.

3 Installation of Katha Baha JE (Alpha release)

Please follow the steps given below to install Katha Baha:

1. Run **setup.exe** by double clicking it.
2. The installer program will then show the welcome screen as shown in Figure 3.1.

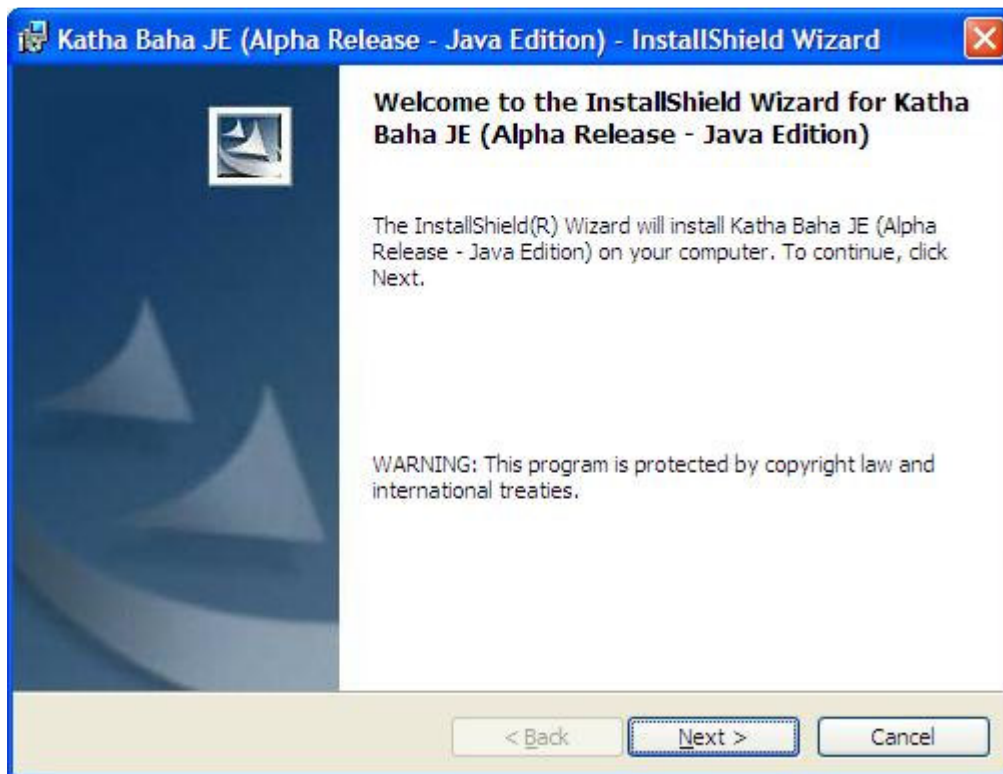


Figure 3.1: Welcome screen

3. Click "**Next**" button. A new window "**Destination Folder**" will appear as shown in Figure 3.2. The default destination folder is. "**C:\Program Files\KathaBaha-JE**". It can be changed by clicking the "**Change**" button. If user does not want to change the destination folder, he can directly go to step number 5.

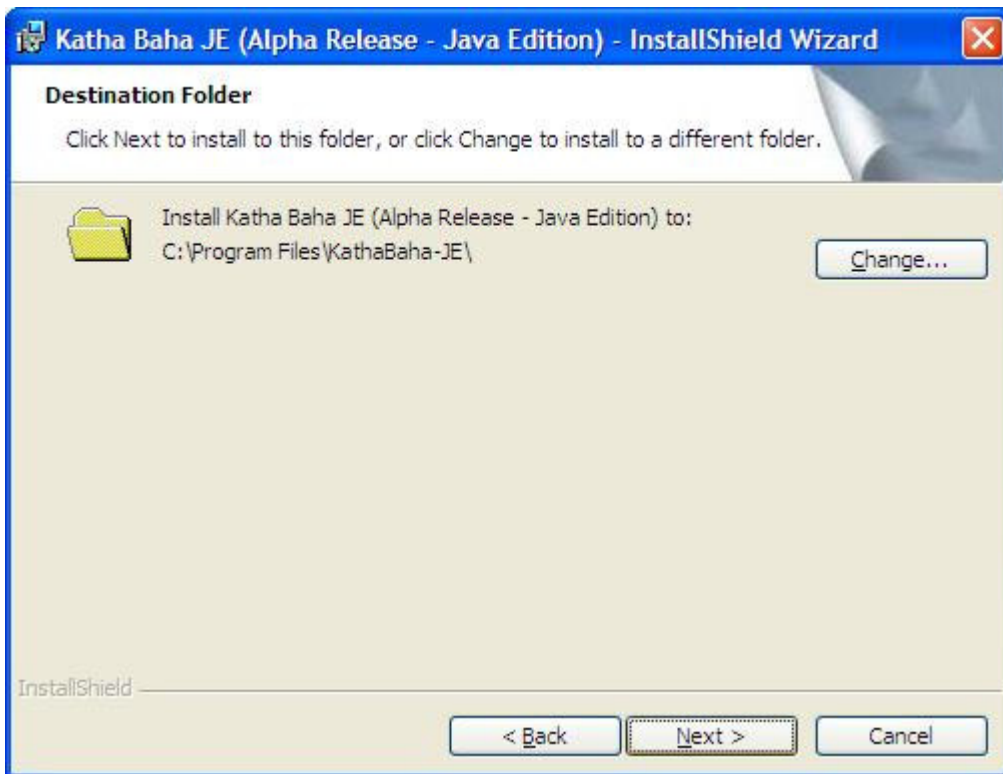



Figure 3.2: Destination Folder window

4. If “**Change**” button is clicked, a new window “**Change Current Destination Folder**” will pop-up. On this window a user can write the destination folder path in the “**Folder name**” text box or alternatively select the destination path through the drop down folder browser menu. In case, user installing the program selects a destination folder that does not exist, the setup program will create a destination folder by the name specified in the given path. The newly created folders are denoted by special new folder icon. () The user also can specify new folders to be created by clicking on “**New folder**” button next to the “Up one level” folder browser button. Please refer Figure 3.3.

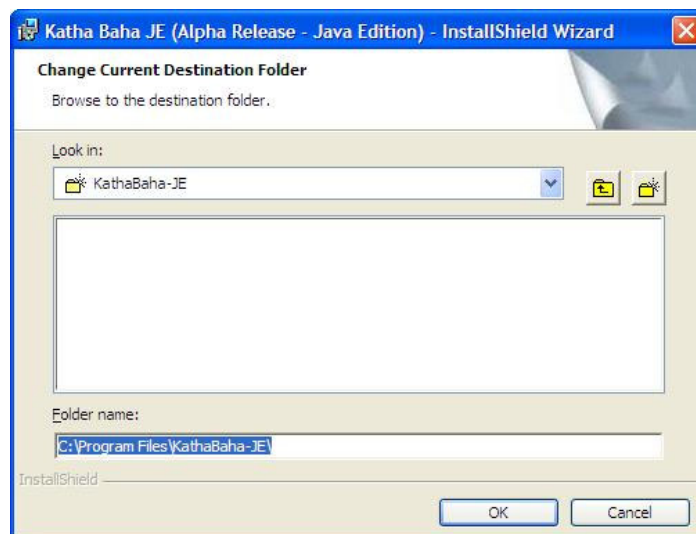


Figure 3.3: Change Current Destination Folder window

5. The installer will display dialogue “**Ready to Install the Program**” which reviews the installation settings. The installer automatically collects information about the user and company from the system. Refer Figure 3.4.

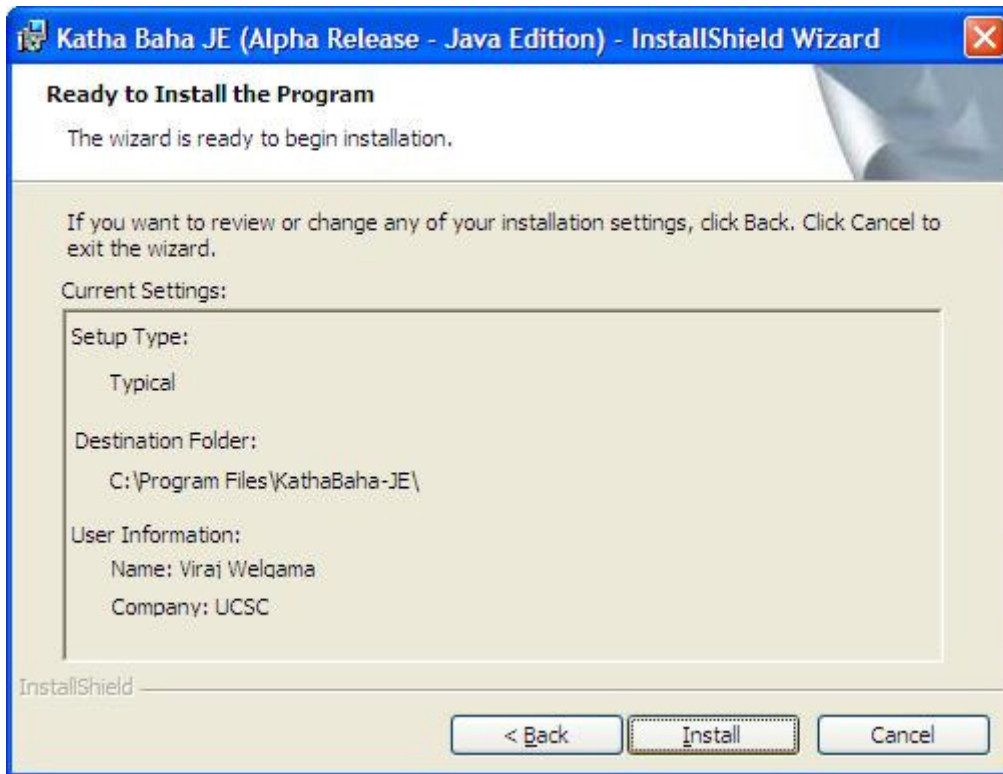


Figure 3.4: Ready to Install the Program window

6. Click “**Install**”.
7. Installer will create directories and start copying the programs files to the destination directory. Progress bar will show the percentage completion of installation process.
8. After successful installation, the installer will show a success message as shown in Figure 3.5. Click **Finish** to complete the setup.

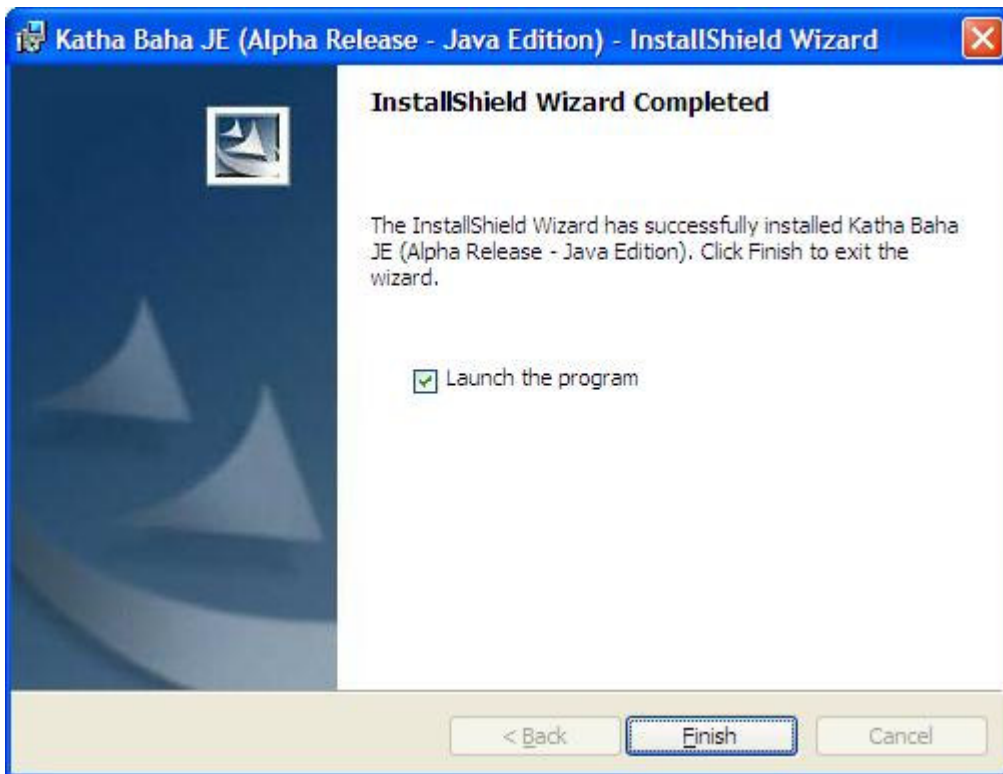


Figure 3.5: Setup complete

9. In order to run the program, navigate through,
 - Windows **Start** menu. -> **All Programs** -> **Katha Baha** and click on **Katha Baha JE**
10. Program start screen will pop up. Figure 3.10 shows the start screen Katha Baha JE (Alpha release). Please refer the User Guide to use this software.



Figure 3.6: Start up screen of Katha-Baha JE

4 Uninstall Katha Baha JE(Alpha release)

Please follow the steps given below to uninstall Sinhala e-Dictionary

1. In order to uninstall the program, navigate through,

Windows **Start** menu. -> **All Programs** -> **Katha Baha** and click on **Uninstall**

Alternatively, the software can be uninstalled by running the windows utility “**Add or Remove Programs**”. Please go through the following instructions.

- On the Windows desktop, click **Start > Control Panel**.
- In Control Panel, double-click **Add/Remove Programs**.
- In the list of currently installed programs, click **Katha Baha JE**
- Click **Remove**.

Uninstaller will remove Katha Baha JE program files and other dependency files from the system.