



**User Guide for
Sinhala Text To Speech (Katha Baha)
(Alpha release)**

September 30, 2005

Language Technology Research Laboratory
University of Colombo School of Computing
Sri Lanka

Table of Contents

1	Introduction.....	3
2	Running the Application	3
3	Using Application.....	3

1 Introduction

This document explains how to use Katha Baha (Alpha release) Sinhala Text-To-Speech Software. This software effectively recognizes the entered Sinhala Unicode text and converts it into speech.

2 Running the Application

After successful installation of software and all its dependencies, follow the steps below to start the application.

Go to, Windows **Start** > **All programs** > **Katha Baha** and click on **Katha Baha JE**

3 Using Application

The start up screen of Katha Baha appears as in Figure 3.1. (The control's labels referred in the figure are described in the latter part of this manual.)

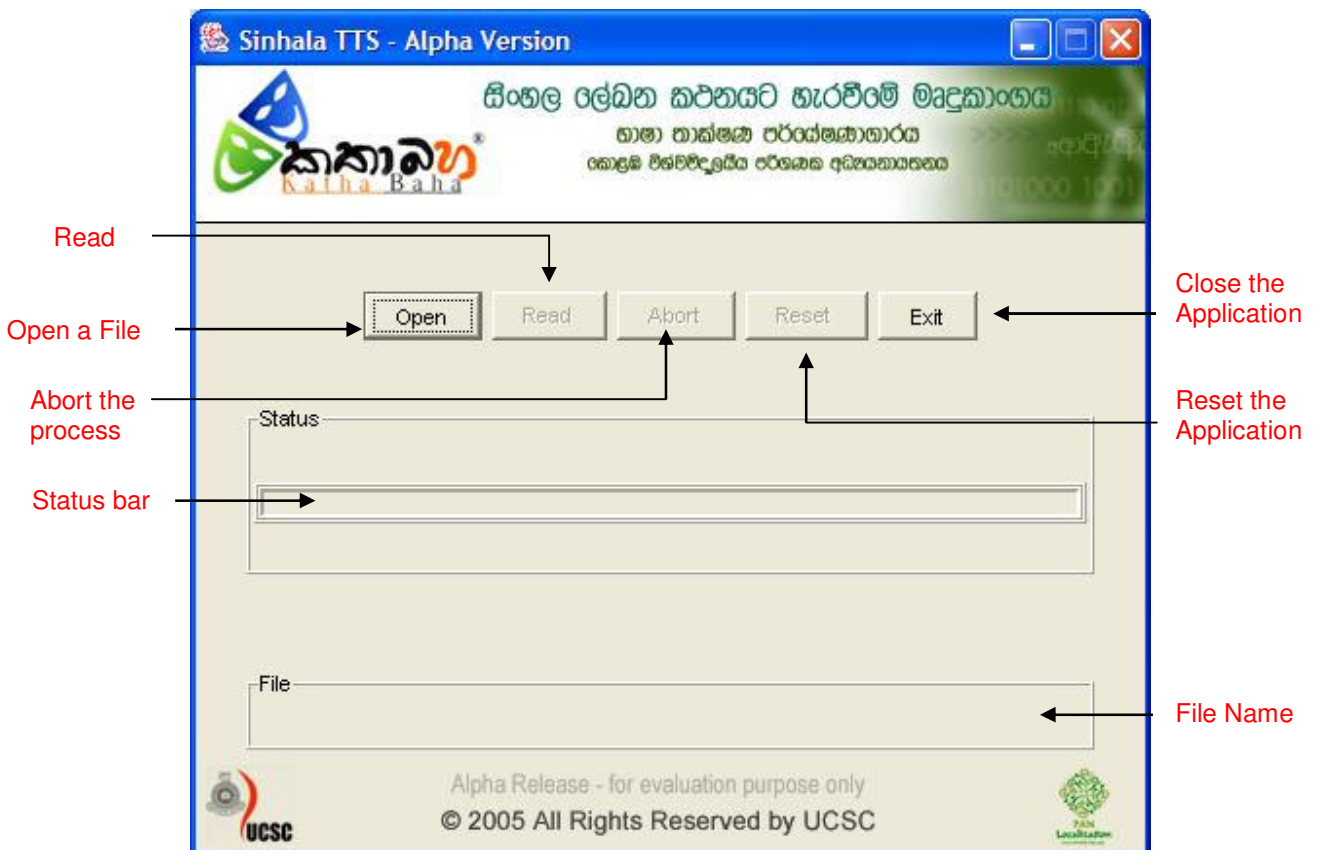


Figure 3.1

“Open Button”

When you click Open button, it shows an *open* dialogue. From this dialogue, a text file can be opened and the path will display at the bottom of the application as shown in figure 3.2.

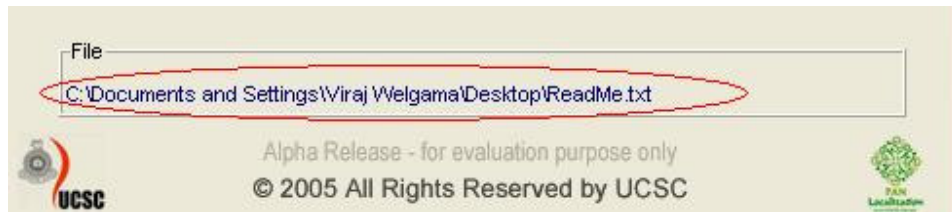


Figure 3.2

“Read Button”

When you click Read button, the software will start processing the given file. It will take some time depend on the size of your input text file. The status bar will indicate the current process as shown in figure 3.3.

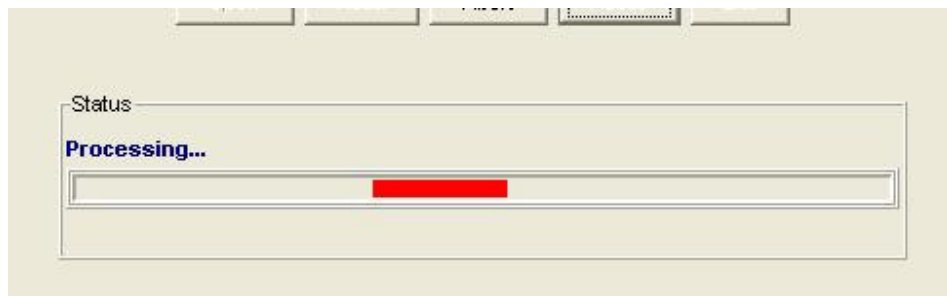


Figure 3.3

While it is being processed, you can abort the process using Abort button. When you click Abort button, It will ask for confirmation. If you click yes, it will abort the process and will continue other wise. (See Figure 3.4)

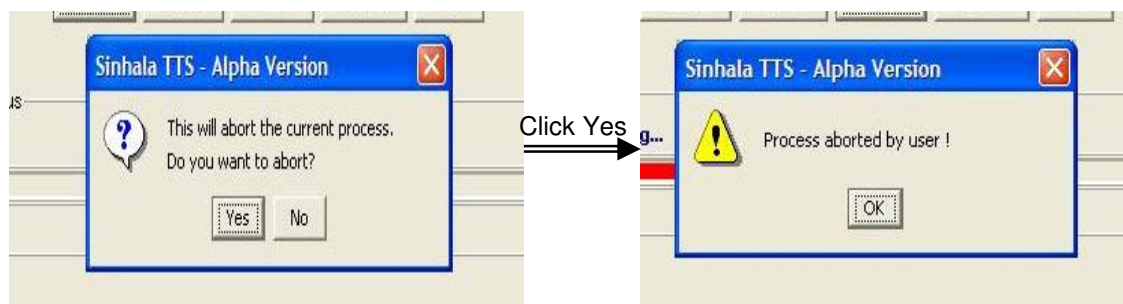


Figure 3.4

When the processing is completed, it will start reading the text. The action is being performed is displayed in the status bar and selected file will display in TTS Text Editor as shown in figure 3.5.

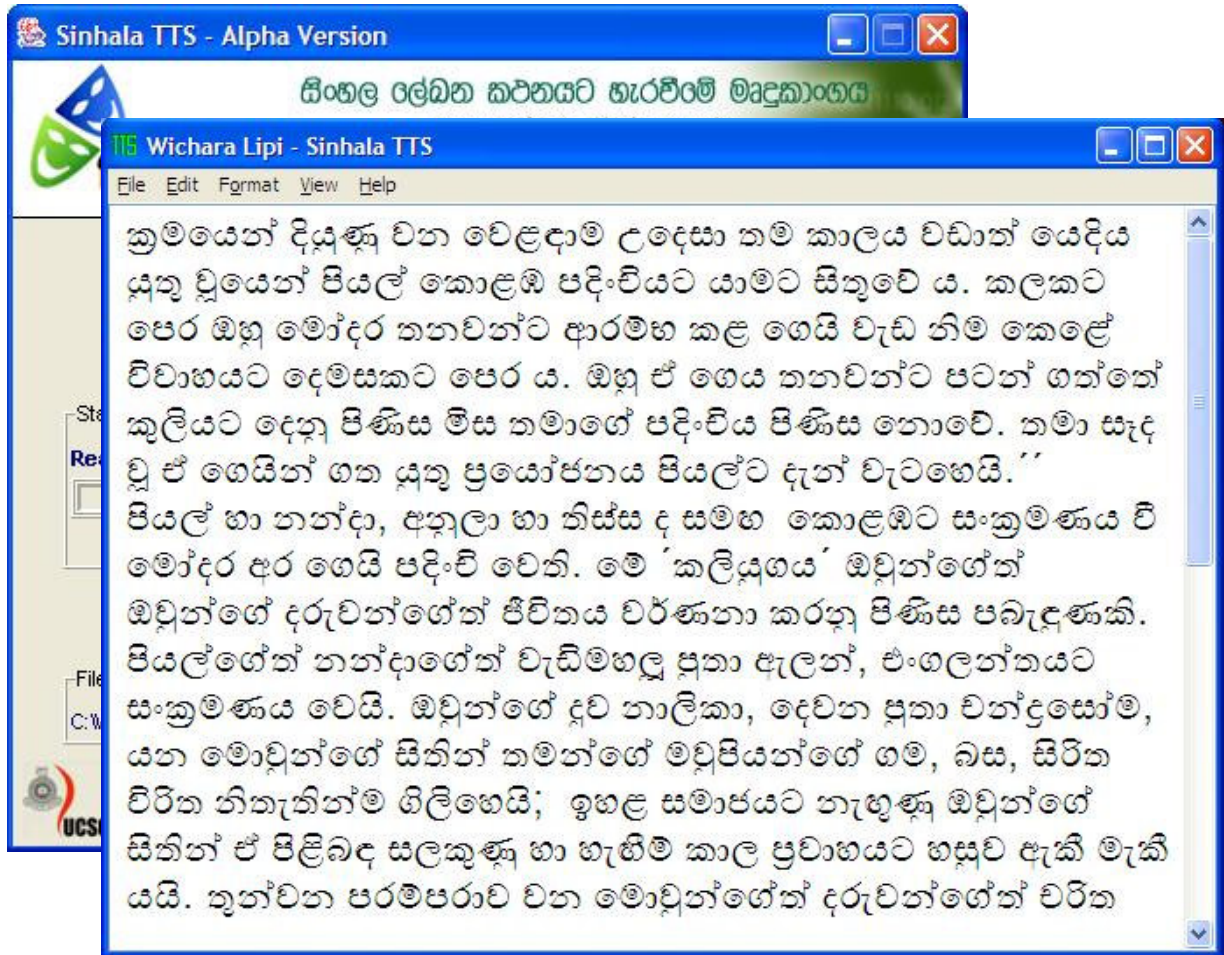


Figure 3.5

“StopReading” Button

The software will immediately terminate the process of reading after confirmation message. (See Figure 3.6)

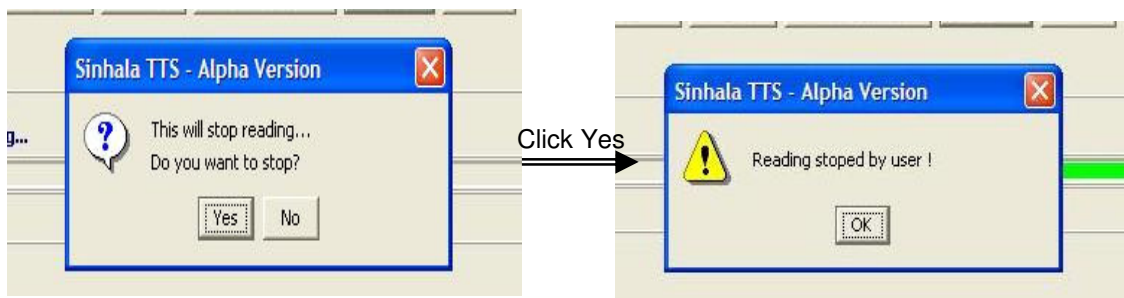


Figure 3.6

“Reset” Button

When you press Reset button the application will refresh to another file. (See Figure 3.7)

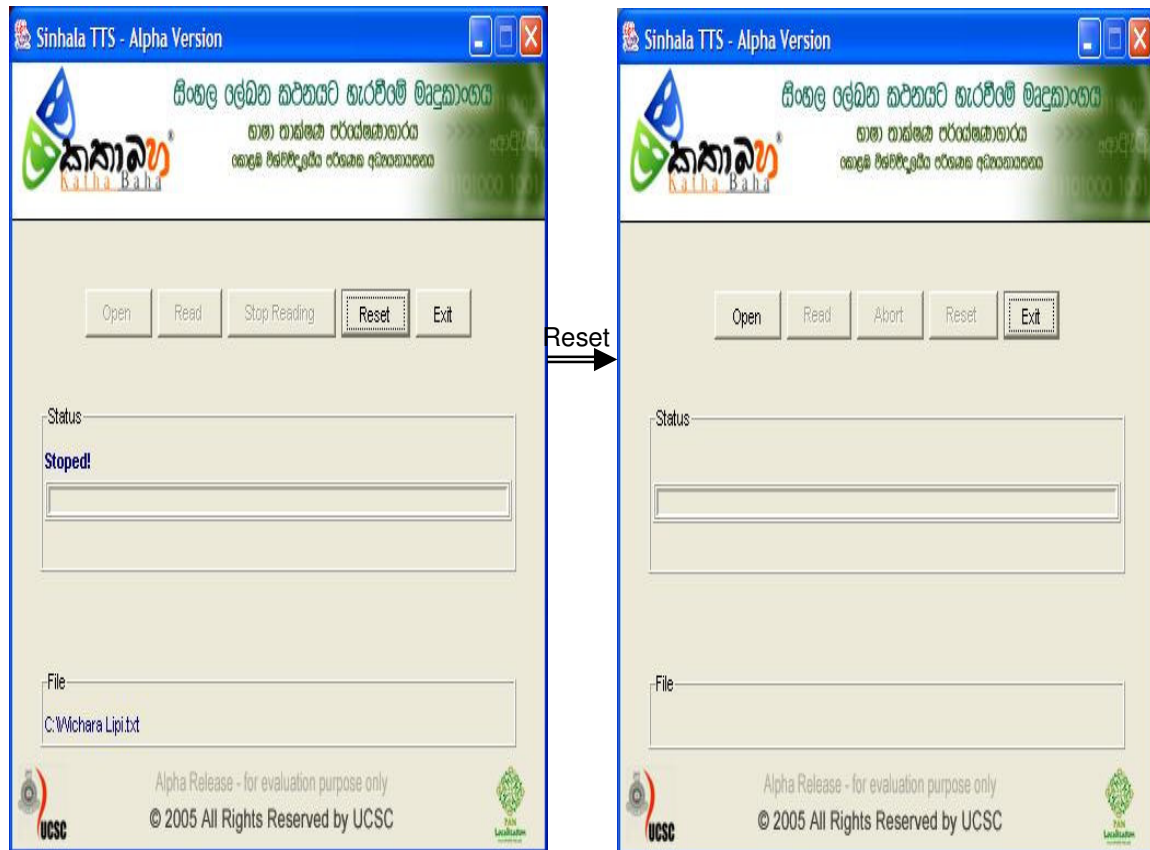


Figure 3.7

“Exit” Button

When you press Exit button the application will close.