



Installation Guide for Sinhala Unicode Converter 2.0

January 26, 2005

**Language Technology Research Laboratory
University of Colombo School of Computing
Sri Lanka**

Table of Contents

1	Introduction.....	3
2	Installation Prerequisite	3
2.1	Hardware Requirements.....	3
2.2	Software Requirements	3
2.3	Administrator Privileges.....	3
3	Installation of Sinhala Unicode Converter 2.0.....	4
4	Uninstall Sinhala Unicode Converter 2.0	11

1 Introduction

This document explains how to install and uninstall Sinhala Unicode Converter 2.0 software. It is utility software that provides facility to convert Sinhala text typed using legacy fonts (ASCII) into Sinhala Unicode text.

2 Installation Prerequisite

2.1 Hardware Requirements

<u>Platform:</u>	Pentium-compatible CPU
<u>Processor:</u>	166 MHz or above
<u>Memory:</u>	64MB or above

2.2 Software Requirements

<u>Operating Systems:</u>	Microsoft® Windows XP, (Service pack 1 or later)
<u>Font Settings:</u>	Microsoft® Sans Serif must be installed.
<u>Other Software:</u>	Java Runtime Environment v. 1.3 or higher* must be installed.

2.3 Administrator Privileges

User must have Administrator privileges to install the Sinhala Unicode Converter utility.

* User can install this software from JRE\SETUP folder. Please refer the installation instruction given in Readme.txt included in the same folder.

3 Installation of Sinhala Unicode Converter 2.0

Please follow the steps given below to install Sinhala Unicode Converter 2.0 software:

1. Run **setup.exe** placed in **CONVERTER\setup** by double clicking it.
2. After initialization, the installer program will show “**Welcome**” window on start up as shown in Figure 3.1.

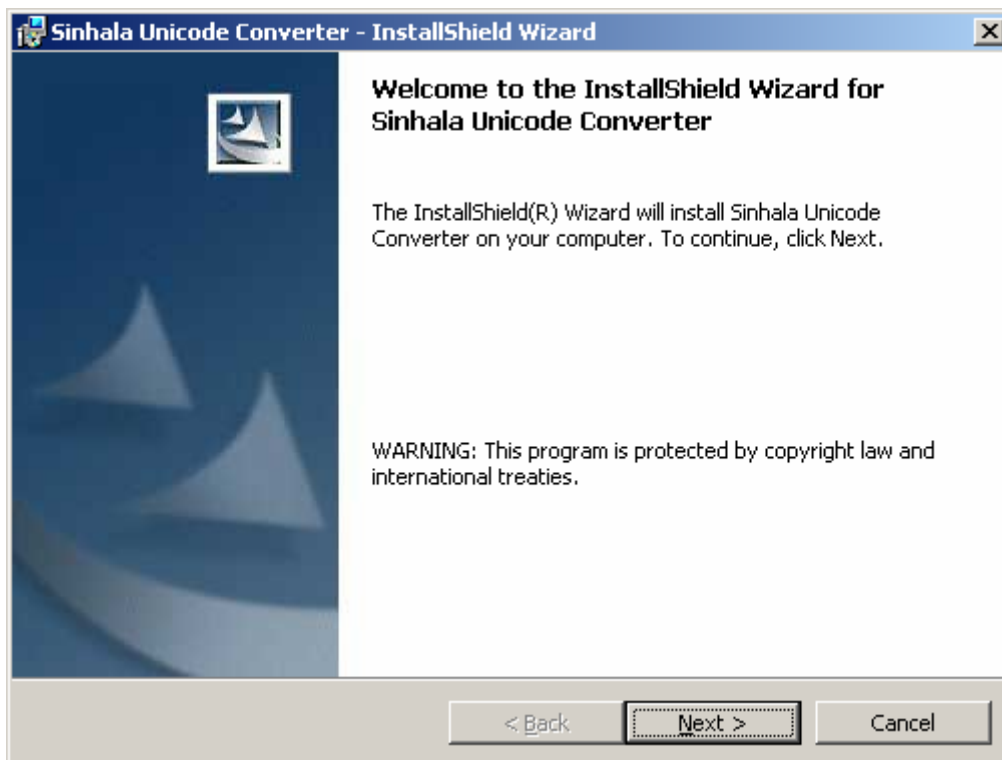


Figure 3.1: Welcome window

3. Click “**Next**” button. A new window “**Destination Folder**” will appear as shown in Figure 3.2. The default destination folder is. “**C:\Program files\Unicode Converter**”. It can be changed by clicking the “**Change**” button. If user does not want to change the destination folder, he can directly go to step number 6.

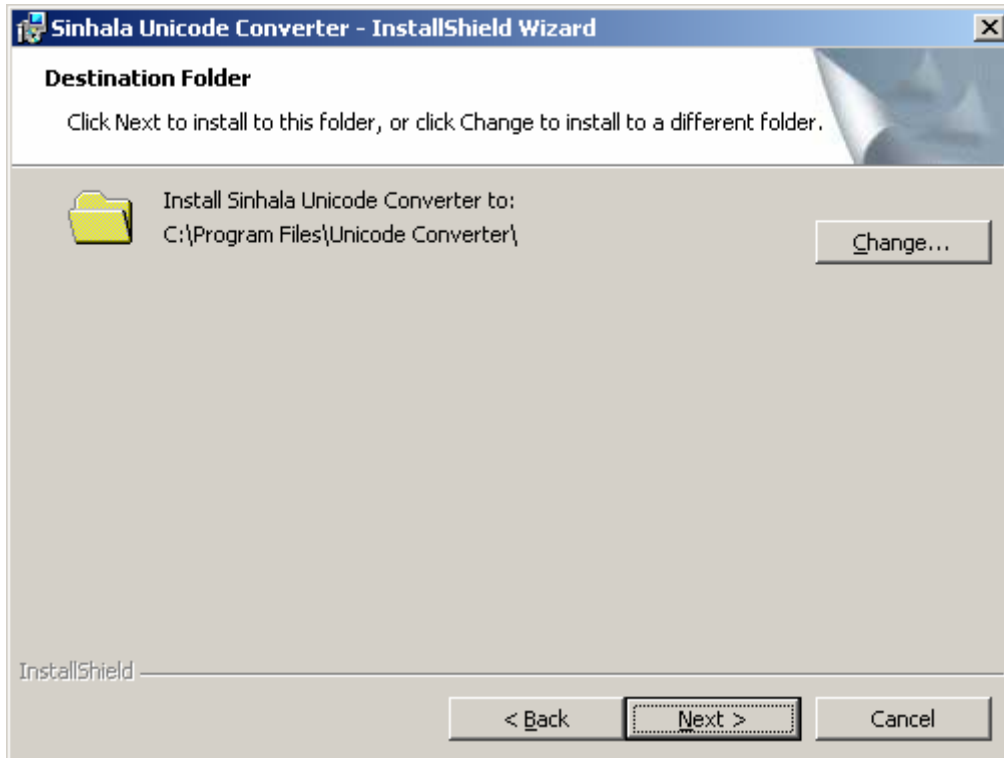



Figure 3.2: Destination Folder window

4. If **“Change”** button is clicked, a new window **“Change Current Destination Folder”** will pop-up. On this window a user can write the destination folder path in the **“Folder name”** text box or alternatively select the destination path through the drop down folder browser menu. In case, user installing the program selects a destination folder that does not exist, the setup program will create a destination folder by the name specified in the given path. The newly created folders are denoted by special new folder icon. () The user also can specify new folders to be created by clicking on **“New folder”** button next to the **“Up one level”** folder browser button. Please refer Figure 3.3.

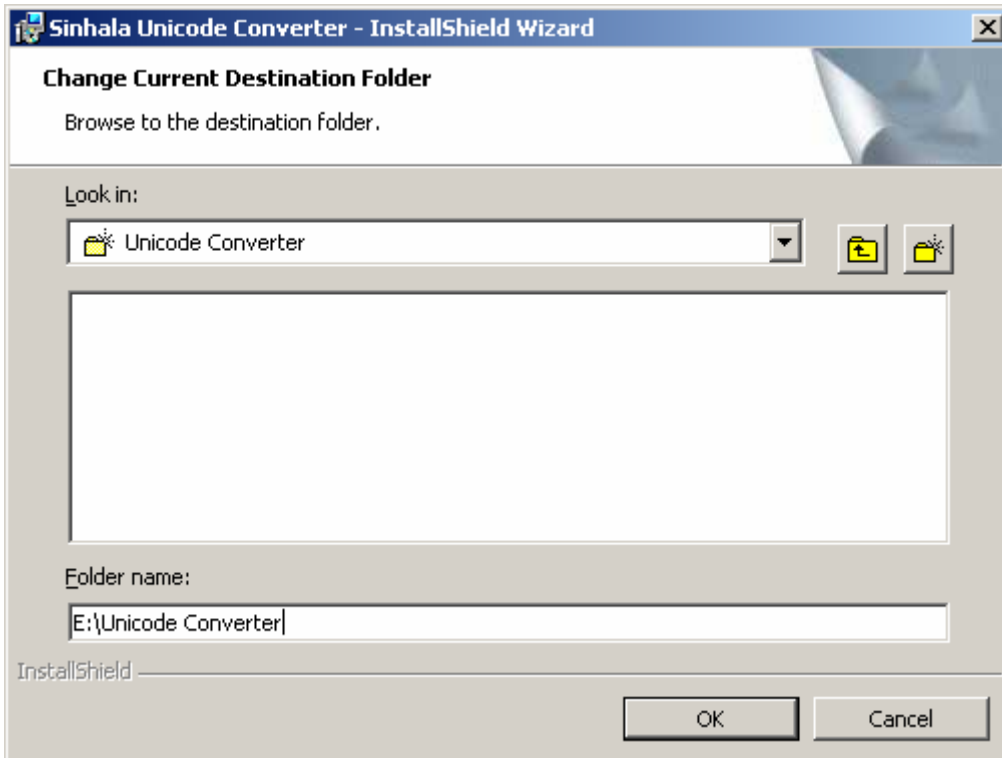


Figure 3.3: Change Current Destination Folder window

5. Click “**OK**”. User can now verify that the path of destination directory has been changed to one that user himself described. Refer Figure 3.4:

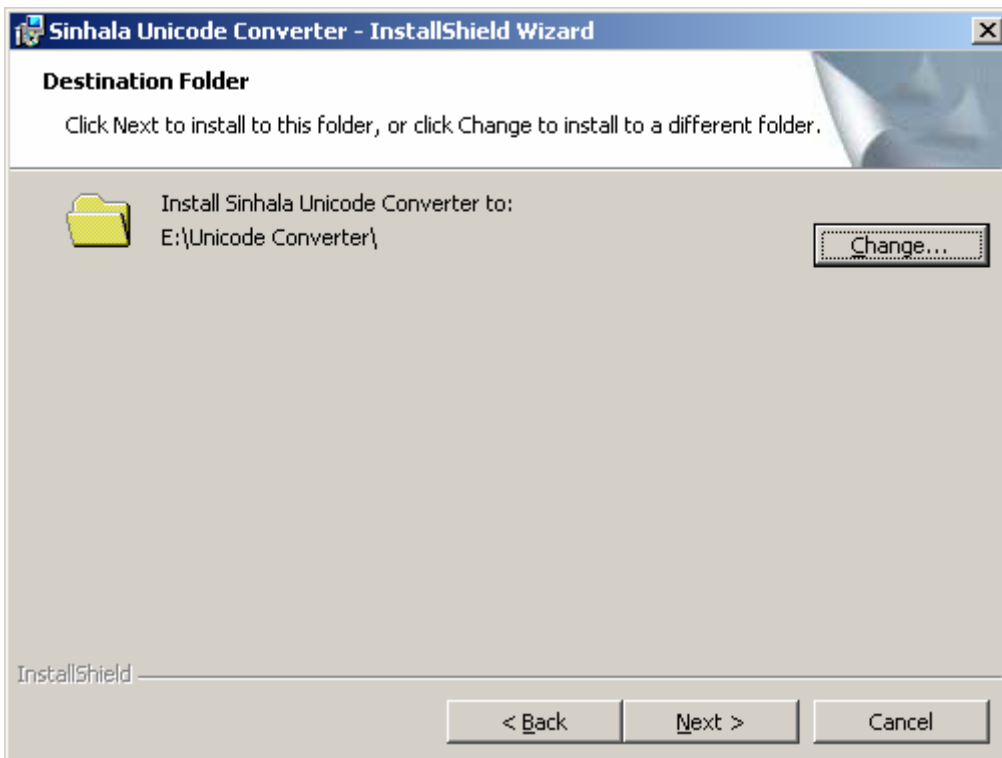


Figure 3.4: Destination Folder window

6. Click **Next**.
7. The installer will display dialogue **“Ready to Install the Program”**, reviewing the installation settings. The installer automatically collects information about the user and company from the system. Refer Figure 3.5

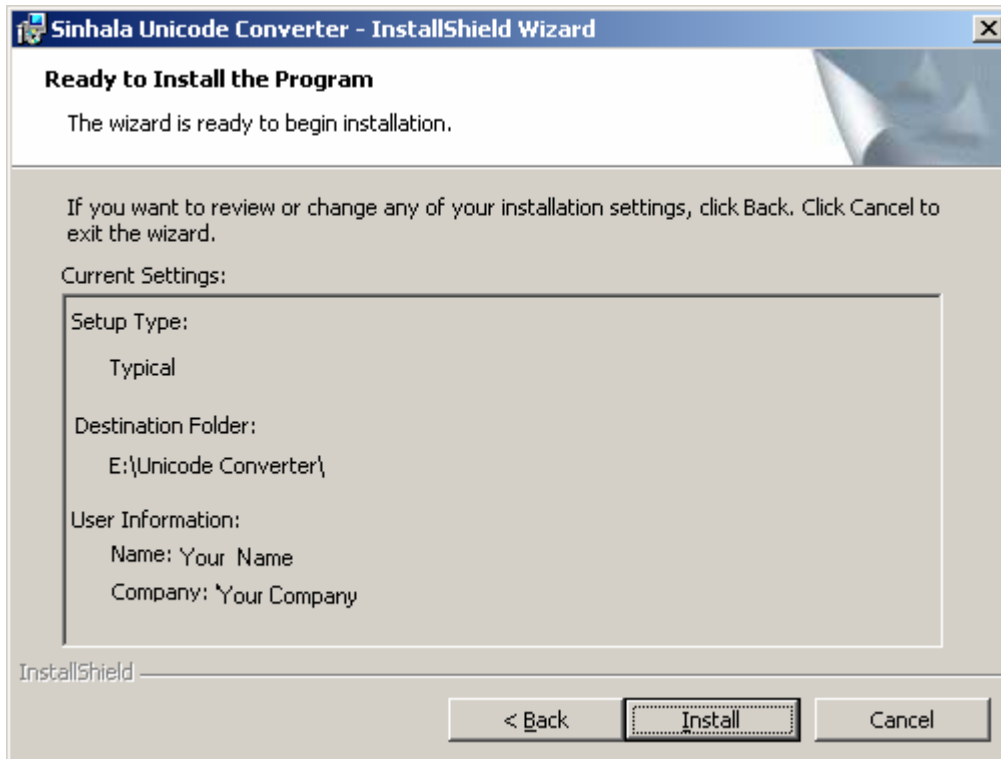


Figure 3.5: Ready to Install the Program window

8. Click **“Install”**.
9. Installer will create directories and start copying the programs files to the destination directory. Progress bar will show the percentage completion of installation process as shown in Figure 3.6.

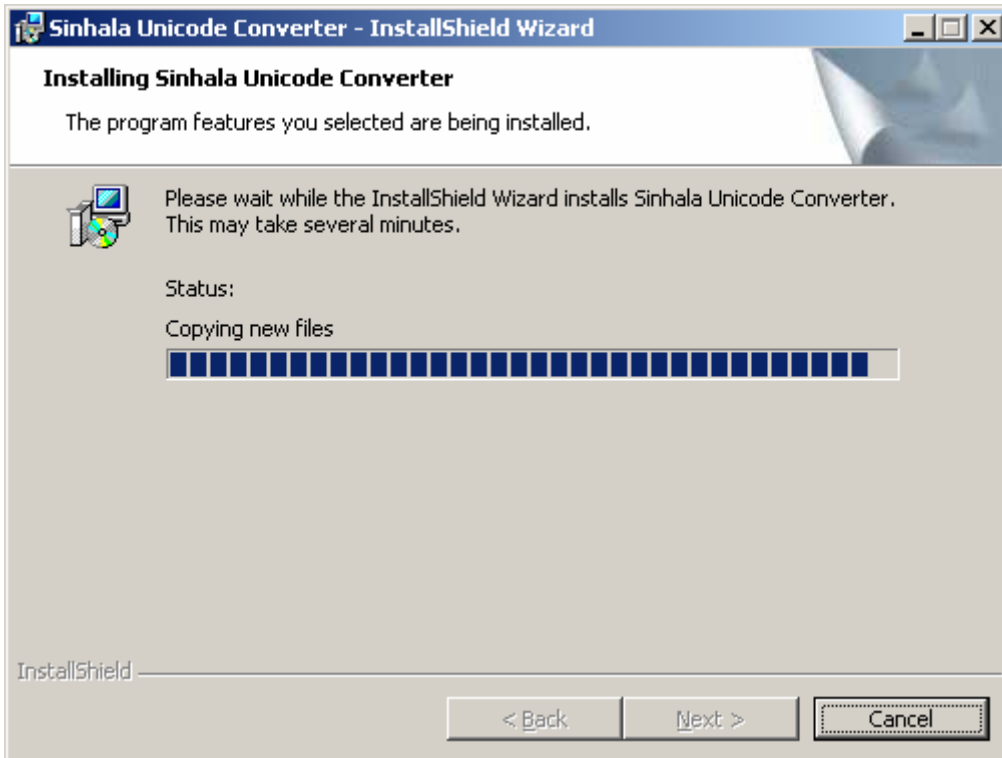


Figure 3.6: Installation in progress

10. After a successful installation, the Sinhala Unicode Converter installer will show a success message. The user can launch the software by checking “**Launch the program**” check box. Click **Finish** to complete the setup. Please refer Figure 3.7.

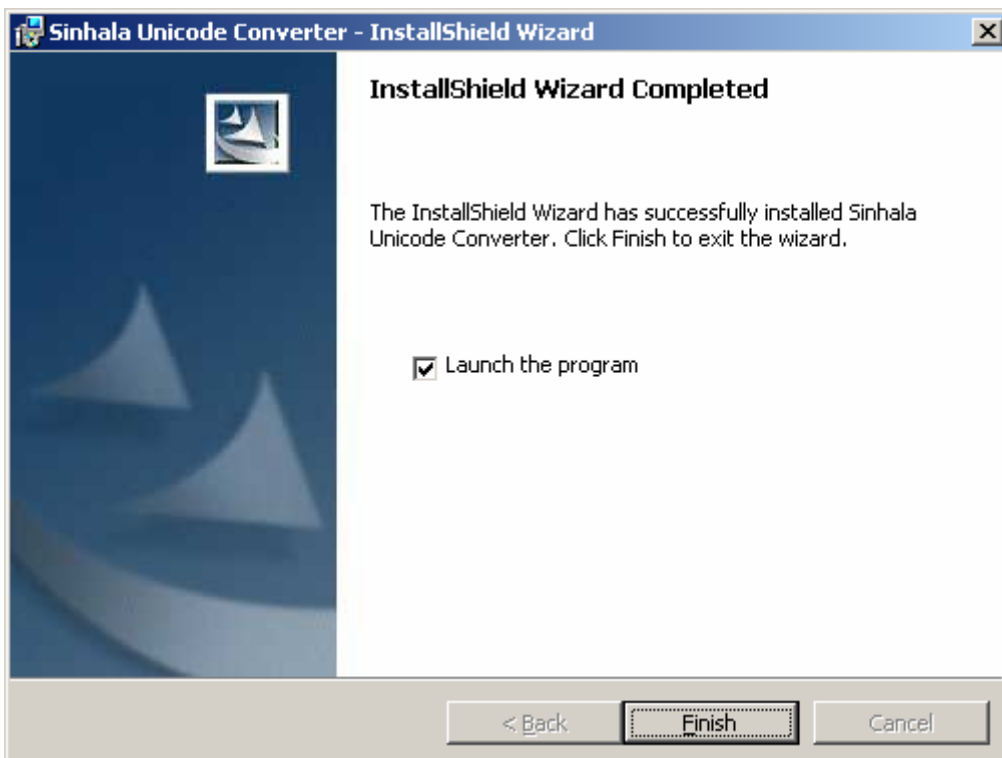


Figure 3.7: Setup complete

11. In order to run the program, navigate through, Windows **Start** menu. -> **All Programs** -> **Unicode Converter** And click on **Unicode Converter**. Please refer Figure 3.8.

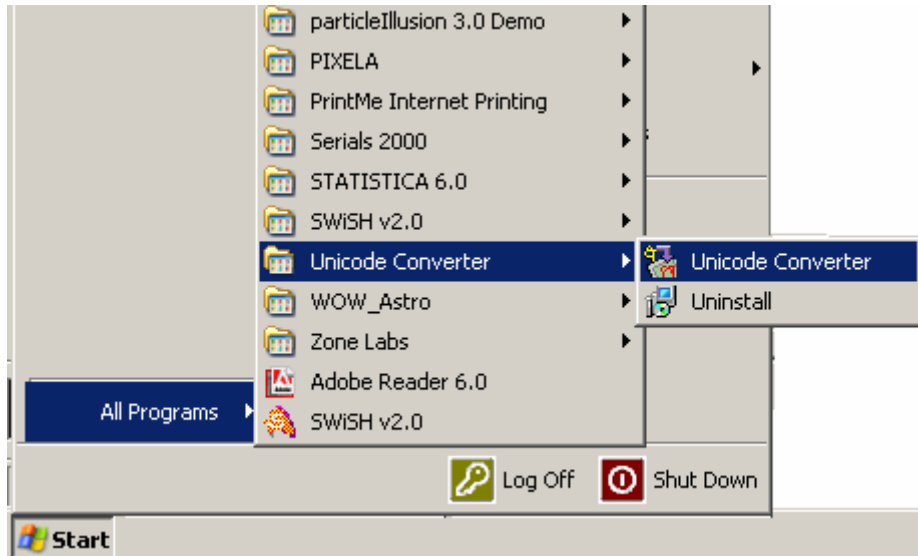


Figure 3.8: Start Sinhala Unicode Converter

12. Program start screen will pop up. Figure 3.9 shows the start screen of Sinhala Unicode Converter 2.0. Refer to the User guide to use this software.

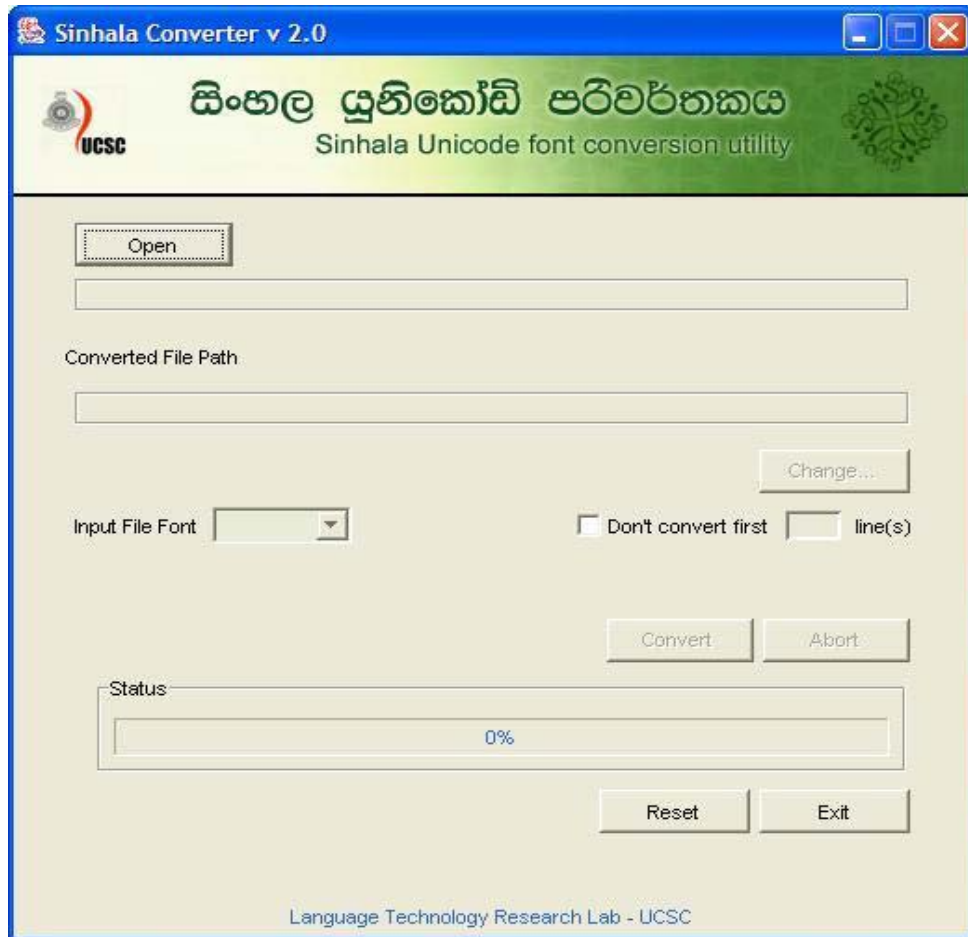


Figure 3.9: Start up screen of Sinhala Unicode Software

NOTE:

Before start using Sinhala Unicode Converter, the user must ensure the proper functionality of **Java Runtime Environment** software. Java Runtime Environment should be installed in the system and it should run as a Windows service in order to start using Sinhala Unicode Software.

If the system is not installed with this software, the user can install the software by clicking on **JRE\SETUP**. Please follow the installation instructions given in the **Readme.txt** contained in the same folder.

4 Uninstall Sinhala Unicode Converter 2.0

Please follow the steps given below to uninstall Sinhala Unicode Converter 2.0.

1. In order to uninstall the program, navigate through, Windows **Start** menu. -> **All Programs** -> **Unicode Converter** and click on **Uninstall**. Please refer Figure 4.1.

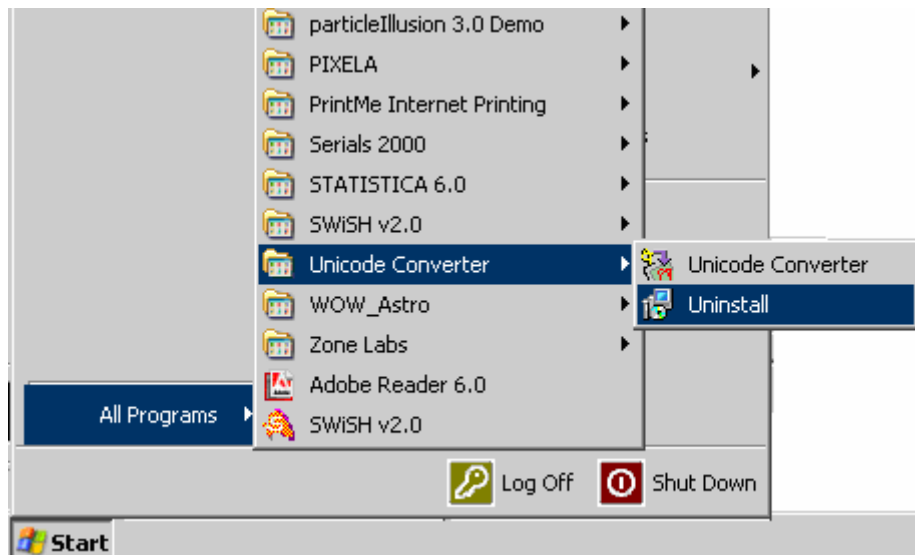


Figure 4.1: Uninstall Sinhala Unicode Converter 2.0

Alternatively, user can uninstall the software by running the windows utility “**Add or Remove Programs**”. Please go through the following instructions. Browse,

Start -> (Settings) -> Control Panel -> Add or Remove Programs

Open the Windows utility **Add or Remove Programs**, and select **Sinhala Unicode Converter** as shown in Figure 4.2.

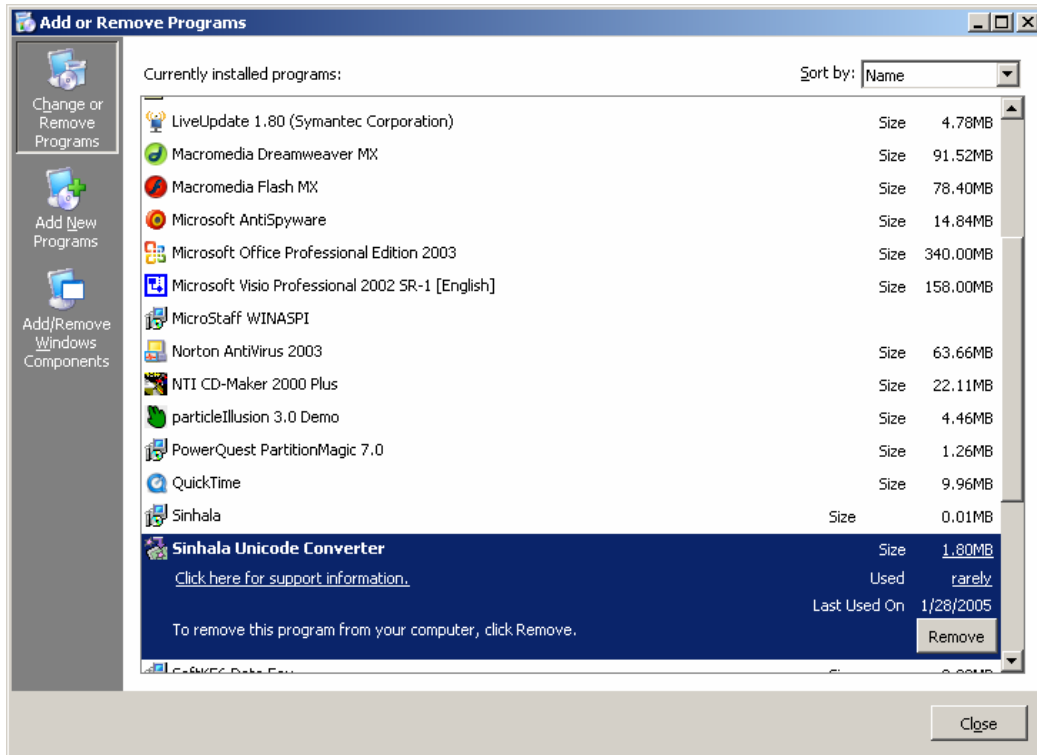


Figure 4.2: Add of Remove Programs, Windows utility

Click on **Change/Remove** button to start Sinhala Unicode Uninstaller program.

2. In startup, Uninstaller will show a Confirmation window as shown in Figure 4.3.

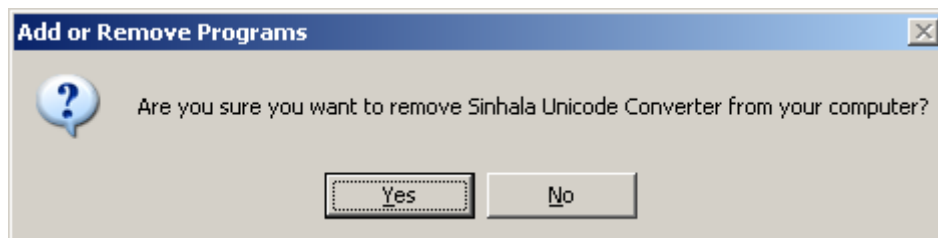


Figure 4.3: Confirm the uninstall operation

3. Click **Yes** button to start uninstalling the program.
4. Uninstaller will remove Sinhala Unicode Converter program files and other dependency file from the system.