



Installation Guide for Sinhala Syllabification Tool (Demo version)

April 20, 2005

**Language Technology Research Laboratory
University of Colombo School of Computing
Sri Lanka**

Table of Contents

1	Introduction.....	3
2	Installation Prerequisite	3
2.1	Hardware Requirements.....	3
2.2	Software Requirements	3
3	Installation of Sinhala Syllabification Tool (Demo version)	4
4	Uninstall Sinhala Syllabification Tool (Demo version).....	8

1 Introduction

This document explains how to install and uninstall Sinhala Syllabification Tool (Demo version) software. The software demonstrates the syllabification of Sinhala Unicode text, words or phonemes. Sinhala Grapheme to Phoneme conversion is also demonstrated by this tool.

2 Installation Prerequisite

2.1 Hardware Requirements

<u>Platform:</u>	Pentium-compatible CPU
<u>Processor:</u>	300 MHz or above
<u>Memory:</u>	64MB or above

2.2 Software Requirements

<u>Operating Systems:</u>	Microsoft® Windows XP, (Service pack 1 or later)
<u>Other Software:</u>	Microsoft .NET Framework version 1.0 Sinhala Language Pack or Sinhala Enabling Patch ¹

User must have Administrator privileges to install the Sinhala Syllabification Tool (Demo version).

¹ Sinhala Language Pack or Sinhala Enabling Pack can be download from the URL: <http://www.ucsc.cmb.ac.lk/ltr/> or <http://www.fonts.lk/>

3 Installation of Sinhala Syllabification Tool (Demo version)

Please follow the steps given below to install Sinhala Syllabification Tool (Demo version):

1. Run **setup.exe** by double clicking it.
2. During setup initialization process, the installer will prompt to install Microsoft® .NET Framework² version 1.0as shown in Figure 3.1.



Figure 3.1: Microsoft® .NET Framework installation prompt

3. Click **“No”** button if **Microsoft® .NET Framework is already installed on your system**. Click **“Yes”** button to start installing Microsoft® .NET Framework. The installer may ask you to reboot the machine if chosen to install the Framework. The installer program will then show the welcome screen as shown in Figure 3.2.

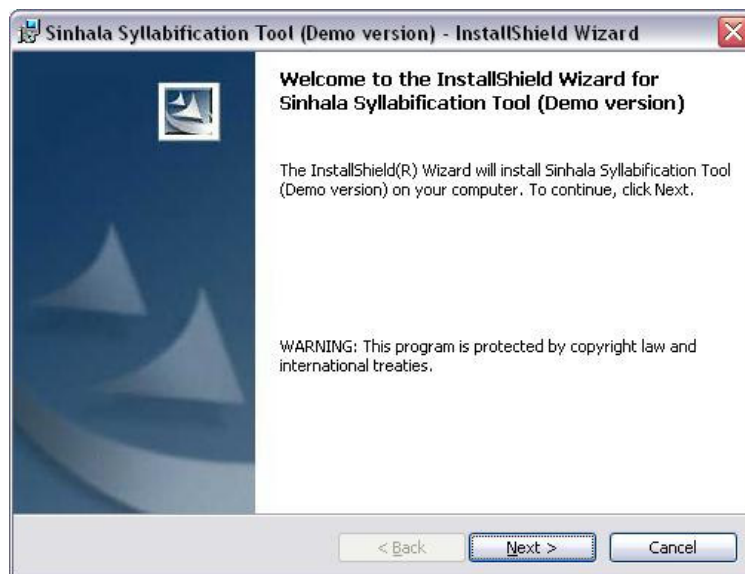


Figure 3.2: Welcome screen

4. Click **“Next”** button. A new window **“Destination Folder”** will appear as in Figure 3.3. The default destination folder is **“C:\Program files\Syllabification Tool”**. The destination folder can be changed by clicking the **“Change”** button. If you do not want to change the installation folder please continue from step number 6.

² The installation guidelines and details of Microsoft® .NET Framework are available on URL: <http://www.microsoft.com/downloads/details.aspx?FamilyId=D7158DEE-A83F-4E21-B05A-009D06457787&displaylang=en>

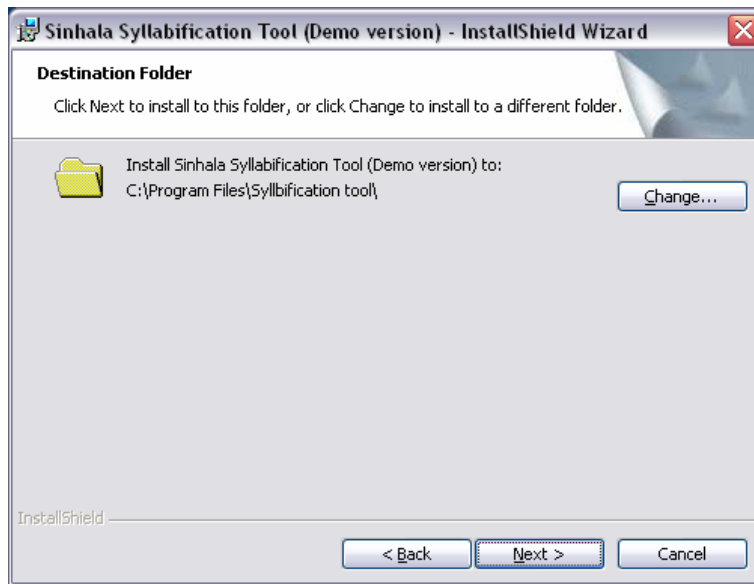



Figure 3.3: Destination Folder window

5. If “**Change**” button is clicked, a new window “**Change Current Destination Folder**” will pop-up. On this window a user can type the destination folder path in the “**Folder name**” text box or alternatively select the destination path through the drop down folder browser menu. In case, user installing the program selects a destination folder that does not exist, the setup program will create a destination folder by the name specified in the given path. The newly created folders are denoted by special new folder icon. () The user also can specify new folders to be created by clicking on “**New folder**” button next to the “Up one level” folder browser button. Please refer Figure 3.4.

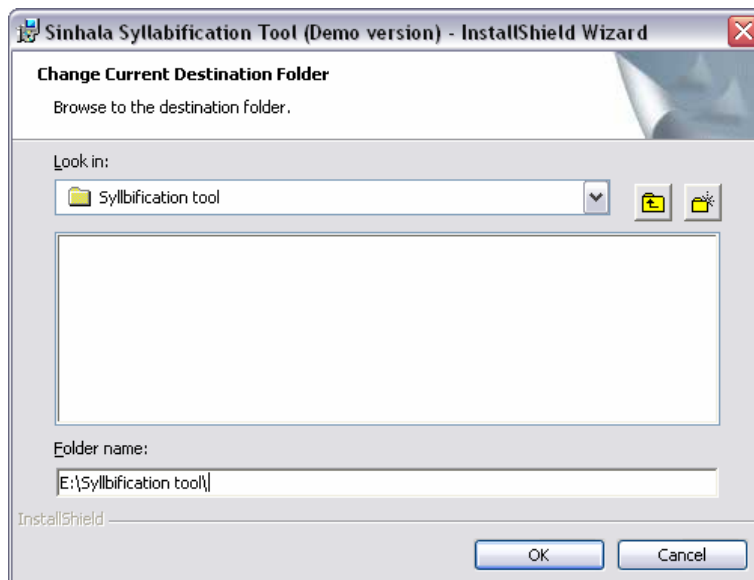


Figure 3.4: Change Current Destination Folder window

6. Click “**OK**” and verify that path of destination directory has been changed.
7. Click **Next**.

- The installer will display dialogue “**Ready to Install the Program**” which reviews the installation settings. The installer automatically collects information about the user and company from the system. Refer Figure 3.5

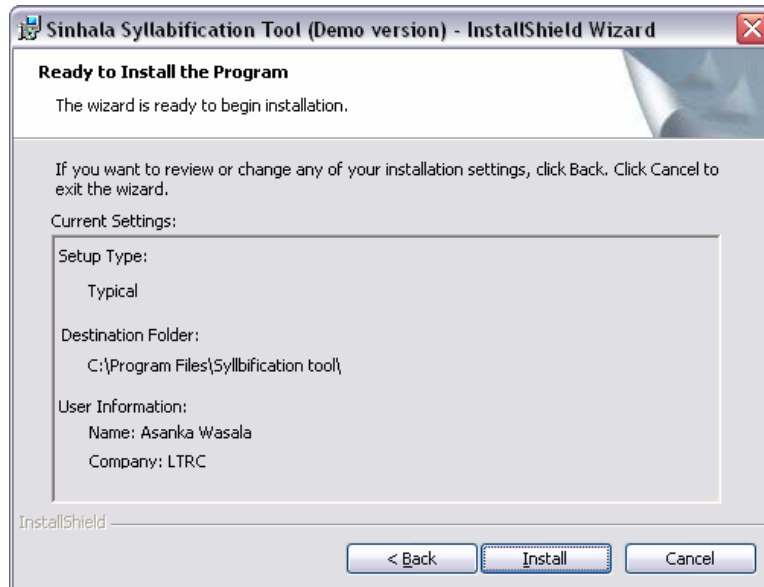


Figure 3.5: Ready to Install the Program window

- Click “**Install**”.
- Installer will create directories and start copying the programs files to the destination directory. Progress bar will show the percentage completion of installation process as shown in Figure 3.6.

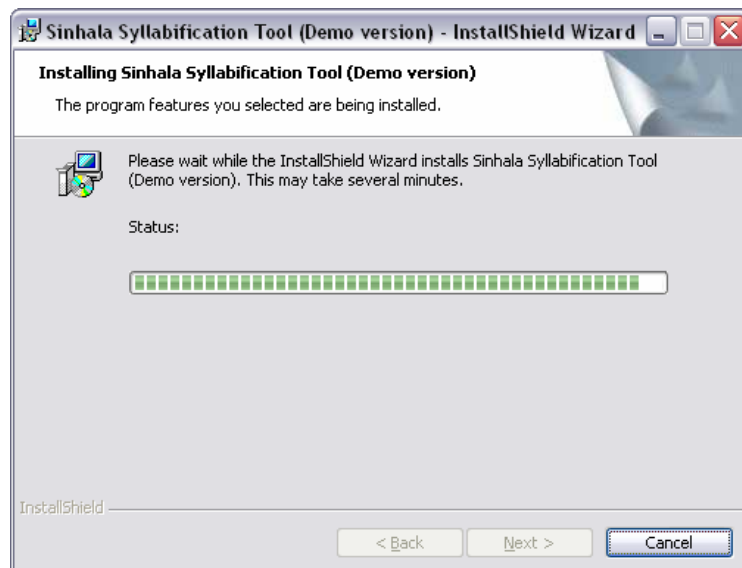


Figure 3.6: Installation in progress

- After successful installation, the installer will show a success message as shown in Figure 3.7. Click **Finish** to complete the setup.

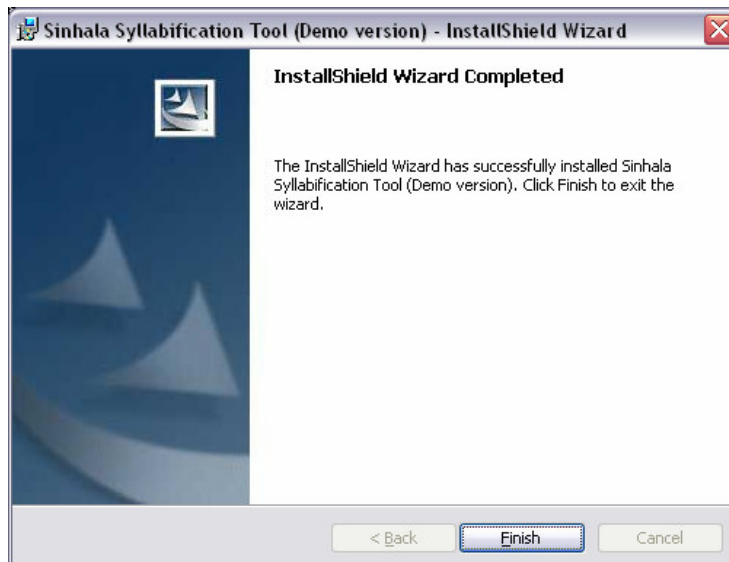


Figure 3.7: Setup complete

12. In order to run the program, navigate through,

Windows **Start** menu. -> **All Programs** -> **Sinhala Syllabification Tool** and click on **Sinhala Syllabification Tool**.

13. Program start screen will pop up. Figure 3.8 shows the start screen of Sinhala Syllabification Tool (Demo version). Please refer the User Guide to use this software.

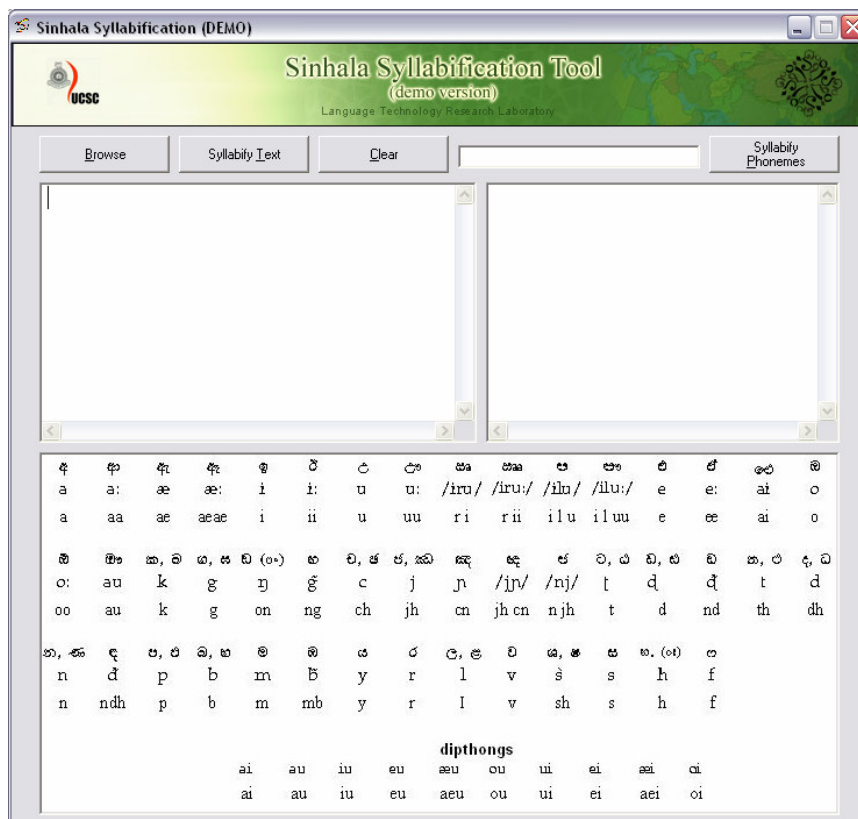


Figure 3.9: Start up screen of Sinhala Syllabification Tool

4 Uninstall Sinhala Syllabification Tool (Demo version)

Please follow the steps given below to uninstall Sinhala Syllabification Tool (Demo version)

1. In order to uninstall the program, navigate through, Windows **Start** menu. -> **All Programs** -> **Sinhala Syllabification Tool** and click on **Uninstall**.

Alternatively, the software can be uninstalled by running the windows utility “**Add or Remove Programs**”. Please go through the following instructions.

- On the Windows desktop, click **Start > Control Panel**.
- In Control Panel, double-click **Add/Remove Programs**.
- In the list of currently installed programs, click **Sinhala Syllabification Tool**
- Click **Remove**.

Uninstaller will remove Sinhala Syllabification Tool program files and other dependency files from the system.